



**Rail King**  
Recognized as the most reliable  
railcar mover in the industry



# Rail King Mobile Railcar Mover

The Rail King™ mobile railcar mover designed and manufactured by Stewart & Stevenson since 1990, supports railcar switching operations throughout the United States, Canada, Mexico and other international locations. Warehousing companies, chemical and refining plants, cement facilities, the grain and feed industry and Class I railroad companies all utilize the power of Rail King railcar movers to increase productivity in their railcar switching operations.

**Rail King**®  
MOBILE RAILCAR MOVER

## Manufacturing expertise produces proven reliability

Rail King G6 mobile railcar movers are made to endure extreme operating conditions, while delivering excellent performance at low cost of ownership.

Rail King designs, engineers, and manufactures each unit for durability to substantially extend the railcar mover's service life.

### Rail King railcar mover advantages:

- Heavy-duty, Cummins QSB6.7 Tier-4 final six-cylinder engine
- Heavy-duty, one-piece frame welded from 2-in. steel
- Individually painted components to combat corrosion
- Vibration/moisture resistance for harsh environments
- Full-width bumpers ensure power train protection
- Free-floating rail axles reduce rail-shock related wear



# Robust, Rugged and Reliable

## Innovative engineering delivers high-performance efficiency

The Rail King G6 maximizes tractive effort to deliver industry leading performance with greater fuel efficiency.

This capability provides three key benefits:

- Increased power output
- Lower fuel consumption
- Reduced noise and engine vibration

Stewart & Stevenson's patented Cushioned Coupler System is composed of fabricated steel couplers and huge shock absorbing isolators pressed into the frame.

Unlike other railcar movers that rely on electronic intervention systems, the G6 advanced weight transfer capability is engineered to automatically enhance tractive effort for better pulling power.

The G6 power train links a Cummins QSB engine, Funk DF 150 4-speed transmission and John Deere axles with no-spin planetary and internal wet-disc brakes.

Free-floating mounts allow rail axles to move up and down in the frame, enhancing stability. Four large rubber isolators minimize rail shock for a smoother ride.

### G6 Rail King with Tier-4 Final Engine Tractive Effort

- RK 330: Provides up to 50,000 lbs
- RK 320: Provides up to 48,600 lbs
- RK 300: Provides up to 47,550 lbs
- RK 290: Provides up to 46,500 lbs
- RK 285: Provides up to 45,500 lbs



## Advanced capabilities help ensure safe, responsive operation

The G6 road profile and larger wheels provide greater ground clearance, enabling it to negotiate obstacles that would prevent other railcar movers from reaching an operating position on the rails.

### Royalglide

The Royalglide four-point platform mounting system provides a no-maintenance suspension system that virtually eliminates rail shock and vibration to the cab, reducing operator fatigue.

### Control and Monitoring Functionality

The PLC-based mobile controller is programmable for enhanced operator safety and comfort. The full-color LCD display in the cab enables operators to view real time engine, transmission, and Rail King operating parameters, as well as active and stored trouble/diagnostic codes. The G6 also features durable multicolor LED rocker switch panels that are programmable to provide immediate feedback to the operator, changing color to acknowledge commands or alerts. G6 control and monitoring components have an IP 67 protection rating: one of the industry's highest.

## Practical design reduces cost of ownership

The Rail King G6 is easy to maintain—lowering the cost of ownership—and features several design advantages:

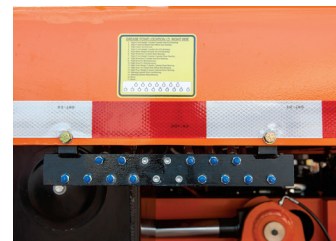
- Simplified hydraulic system features a single-pressure compensated, hydraulic pump, simple push button controls, and central manifold for easy service
- Simplified wiring aids component installation
- Enhanced error detection and fault confinement improve diagnostics
- Customized planned maintenance programs and certified parts and service keep your railcar assets reliable for decades

### Customizable

The G6 has independent road and rail wheels for easy mobility on road surfaces or rail tracks and is available in full-width and side-mount cab versions.

With a wide selection of optional equipment, Stewart & Stevenson can tailor each Rail King to fit individual customer needs. Options include several popular features:

- Cab air conditioning
- Centralized lubrication systems
- Remote control
- Arctic and corrosion protection packages
- Fire extinguisher
- Extra lighting packages



## Rail King Advantages

### Rail King Guarantee

As in previous generations of Rail King models, each new Rail King mobile railcar mover is backed by an industry leading, 2 year/3000-hour warranty.

### Comprehensive dealer sales network

Each authorized dealer has factory trained mobile railcar mover sales specialists that understand how grades and curves affect tractive effort requirements; their ability to analyze a customer's needs ensures the properly sized mobile railcar is selected for the intended application.

### Rental program

Our dealers support a nationwide mobile railcar mover rental program with technicians that use dedicated service/PM trucks to ensure our dealers can offer a modern, well maintained rental fleet.

### Pre-owned Equipment

Comprehensive inspections and OEM parts resources enable reconditioned and as-is mobile railcar movers to be purchased at substantial savings.

### Financing

Long-term relationships with financial institutions that can provide financing structured to address clients' unique operational and budgetary requirements.

### Service & Maintenance

Custom and planned maintenance programs enable factory-trained service technicians to meet a broad range of client needs.

### Parts Management

Factory-supplied, new and remanufactured replacement parts are available through our dealer network.

### Training

Customized on-site operator and technical training programs are available, covering functions, controls, safe operation, operational check points, and maintenance.

### TrackGlass

Included with every new Rail King G6, TrackGlass, the non-toxic, odorless, non-flammable, and non-sparking traction media helps reduce wheel slip. Also available from your authorized Rail King dealer.



**A U T H O R I Z E D**  
**D E A L E R S**  
**IN 50 STATES**  
**CANADA, MEXICO**  
**& SOUTH AMERICA**

# Rail King<sup>®</sup>

**MOBILE RAILCAR MOVER**

[railking.net](http://railking.net)

**Rail King Headquarters**

10750 Telge Road  
Houston, TX 77095  
Phone: 281-345-5110  
Toll free: 855-744-9481  
Email: [sales@railking.net](mailto:sales@railking.net)



19-06-04 ©2019 Stewart & Stevenson

The information in this publication, including text, images and links, which may change at any time, is provided "AS IS" by Stewart & Stevenson without warranty of any kind, either expressed or implied, including but not limited to, the implied warranties or merchantability, fitness for a particular purpose or non-infringement. Stewart & Stevenson is a registered trademark of Stewart & Stevenson LLC.

