



CATALOG OF SPECIALTY PARTS

Contact Your Customer Service Representative Today!



Customize your lift truck to work for your specific needs!

CAMERAS - LIGHTS - SEATS - HORNS - GUARDS - FIRE SUPPRESSION - CAB ACCESSORIES - TOOL BOXES - STEPS





Taylorize Your Taylor With SPECIALTY PARTS

TAYLOR SUDDEN SERVICE OEM LIFT TRUCK PARTS

No one can match Sudden Service's commitment to genuine Taylor OEM lift truck parts availability. It is backed by over 95 years of customer satisfaction. Taylor Sudden Service provides exclusive worldwide distribution of genuine Taylor OEM parts and forklift service for equipment designed, manufactured, and marketed by Taylor Machine Works, Inc. Backed by over 95 years of customer satisfaction, a network of direct service centers, nationwide dealer support organizations, and factory-trained service technicians. Taylor Sudden Service is committed to providing the industry's best parts and service support.



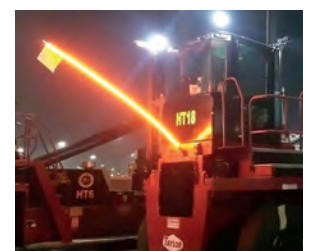
LIGHTS

#	Description:	Part #:
1	Remote Search Light	I 1 98 3501
2	Remote Search Light (To Be Used With A Rider Seat Only)	I 1 98 3502
3	Stop / Tail / Turn Lights	I 1 98 3505
4	LED Blue Light (1 Fwd 1 Rev)	I 1 98 3577
5	LED Blue Spotlight (Rev)	I 1 98 3578
6	LED Red (1 Fwd 1 Rev)	I 1 98 3579
7	LED Lights (Fwd Red) (Rev Blue)	I 1 98 3580
8	Blue Lights (Fwd/Rev)	I 1 98 3488
9	LED Lights (2 Fwd Red) (2 Rev Blue)	I 1 98 3581
10	LED Lights (2 Fwd Blue) (2 Rev Red)	I 1 98 3582
11	Additional Strobe (Amber) (Mounts To A-Frame)	I 1 98 3592
12	Additional Strobe (Blue) (Mounts To A-Frame)	I 1 98 3593
13	Remote Search Light	I 1 98 3594
14	Clear Strobe Light (Reverse Actuated)	I 1 98 3595
15	HID Lights: 2 A-Frame / 2 Mast Lights (1 High, 1 Low)	I 1 98 3597
16	Work Light Circuit: 2 A-Frame / 2 Mast Lights	I 1 98 3599
17	LED Work Light Circuit: 2 A-Frame / 2 Mast Lights (1 High, 1 Low)	I 1 98 3600
18	8 LED Lights: 2 Mast (1 High 1 Low) / 2 Front Cab/ 2 Front Fender	I 1 98 3601
19	LED Lights: 2 Mast (1 High 1 Low) / 2 A-Frame	I 1 98 3654
20	Lights: 2 A-Frame / 2 Front Cab	I 1 98 3598
21	5 Lights: 2 Lights On Fender / 2 Lights On Top Of Cab (Forward) / 1 Light on Bottom of Cab (Forward)	I 1 98 3602
22	2 Mast Lights (1 High 1 Low) / 2 Cab Lights (On Front Corners)	I 1 89 3609
23	Mast Lights (1 High 1 Low) / 2 Fender Lights (Forward)	I 1 98 3610
24	Mast Lights (1 High 1 Low) / 2 A-Frame Lights (Rearward)	I 1 98 1716
25	Additional Work Light Circuit: 2 Mast Lights (1 High 1 Low) / 2 A-Frame Lights (Rearward)/ 2 Cab Lights (On Front Corners)/ 2 Fender Lights (Forward)	I 1 98 3655
26	Additional Work Light Circuit: 2 Cab Lights (Front Corners) / 2 Fender Lights (Forward)	I 1 98 3656
27	Additional Work Light Circuit: 2 Mast Lights(1 High 1 Low) / 2 A-Frame Lights (Rear)	I 1 98 3657
28	Additional Work Light Circuit: 2 Fender Lights (Forward)/ 4 Cab Lights	I 1 98 3658
29	2 Additional Lights: (Facing Rear) (Reverse Activated)	I 1 98 3611
30	2 Additional HID Lights: (Facing Rear) (Reverse Activated)	I 1 98 3612
31	2 Additional LED Lights: (Facing Rear) (Reverse Activated)	I 1 98 3613
32	HID Work Lights: 2 Fender Lights (Forward)/ 2 Cab Lights (Front Corners)	I 1 98 3603
33	HID Additional Work Lights: 2 Mast Lights (1 High 1 Low)/ 2 Cab Lights (Front Corners)	I 1 98 3604
34	HID Additional Work Lights: 2 Mast Light (1 High 1 Low)/ 2 Fender Lights (Forward)	I 1 98 3605
35	HID Additional Work Lights: 2 Mast Lights (1 High 1 Low)/ 2 A-Frame Lights (Rear)	I 1 98 3606
36	HID Additional Work Lights: 2 Mast Lights (1 High 1 Low)/ 2 A-Frame Lights (Rearward)/ 2 Cab Lights (On Front Corners)/ 2 Fender Lights (Forward)	I 1 98 3607
37	Additional Work Light Circuit: 2 Fender Lights (Forward)/2 Cab Lights (Front Corners)	I 1 98 3608
38	Stop, Turn, Reverse, Tail Lights On High Bar	I 1 98 3614
39	Flashing Tail Light (Reverse)	I 1 98 3615



SAFETY LIGHTS & MOUNTS

#	Description:	Part #:
1	1' Bright BLUE LED - 12 Volt Whip w/ 10" X 12" Flag - Threaded Base	2400 667
2	1' Bright ORANGE LED - 12 Volt Whip w/ 10" X 12" Flag - Threaded Base	2400 668
3	1' Bright RED LED - 12 Volt Whip w/ 10" X 12" Flag - Threaded Base	2400 669
4	1' Bright WHITE LED - 12 Volt Whip w/ 10" X 12" Flag - Threaded Base	2400 670
5	1' Bright BLUE LED - 24 Volt Whip w/ 10" X 12" Flag - Threaded Base	2400 671
6	1' Bright ORANGE LED - 24 Volt Whip w/ 10" X 12" Flag - Threaded Base	2400 672
7	1' Bright RED LED - 24 Volt Whip w/ 10" X 12" Flag - Threaded Base	2400 673
8	1' Bright WHITE LED - 24 Volt Whip w/ 10" X 12" Flag - Threaded Base	2400 674
9	2' Bright BLUE LED - 12 Volt Whip w/ 10" X 12" Flag - Threaded Base	2400 624
10	2' Bright ORANGE LED - 12 Volt Whip w/ 10" X 12" Flag - Threaded Base	2400 625
11	2' Bright RED LED - 12 Volt Whip w/ 10" X 12" Flag - Threaded Base	2400 626
12	2' Bright WHITE LED - 12 Volt Whip w/ 10" X 12" Flag - Threaded Base	2400 627
13	2' Bright BLUE LED - 24 Volt Whip w/ 10" X 12" Flag - Threaded Base	2400 628
14	2' Bright ORANGE LED - 24 Volt Whip w/ 10" X 12" Flag - Threaded Base	2400 629
15	2' Bright RED LED - 24 Volt Whip w/ 10" X 12" Flag - Threaded Base	2400 630
16	2' Bright WHITE LED - 24 Volt Whip w/ 10" X 12" Flag - Threaded Base	2400 631
17	4' Bright BLUE LED - 12 Volt Whip w/ 10" X 12" Flag - Threaded Base	2400 632
18	4' Bright ORANGE LED - 12 Volt Whip w/ 10" X 12" Flag - Threaded Base	2400 633
19	4' Bright RED LED - 12 Volt Whip w/ 10" X 12" Flag - Threaded Base	2400 634
20	4' Bright WHITE LED - 12 Volt Whip w/ 10" X 12" Flag - Threaded Base	2400 635
21	4' Bright BLUE LED - 24 Volt Whip w/ 10" X 12" Flag - Threaded Base	2400 636
22	4' Bright ORANGE LED - 24 Volt Whip w/ 10" X 12" Flag - Threaded Base	2400 637
23	4' Bright RED LED - 24 Volt Whip w/ 10" X 12" Flag - Threaded Base	2400 638
24	4' Bright WHITE LED - 24 Volt Whip w/ 10" X 12" Flag - Threaded Base	2400 639
25	6' Bright BLUE LED - 12 Volt Whip w/ 10" X 12" Flag - Threaded Base	2400 640
26	6' Bright ORANGE LED - 12 Volt Whip w/ 10" X 12" Flag - Threaded Base	2400 641
27	6' Bright RED LED - 12 Volt Whip w/ 10" X 12" Flag - Threaded Base	2400 642
28	6' Bright WHITE LED - 12 Volt Whip w/ 10" X 12" Flag - Threaded Base	2400 643
29	6' Bright BLUE LED - 24 Volt Whip w/ 10" X 12" Flag - Threaded Base	2400 644
30	6' Bright ORANGE LED - 24 Volt Whip w/ 10" X 12" Flag - Threaded Base	2400 645
31	6' Bright RED LED - 24 Volt Whip w/ 10" X 12" Flag - Threaded Base	2400 646
32	6' Bright WHITE LED - 24 Volt Whip w/ 10" X 12" Flag - Threaded Base	2400 647
33	8' Bright BLUE LED - 12 Volt Whip w/ 10" X 12" Flag - Threaded Base	2400 648
34	8' Bright ORANGE LED - 12 Volt Whip w/ 10" X 12" Flag - Threaded Base	2400 649
35	8' Bright RED LED - 12 Volt Whip w/ 10" X 12" Flag - Threaded Base	2400 650
36	8' Bright WHITE LED - 12 Volt Whip w/ 10" X 12" Flag - Threaded Base	2400 651
37	8' Bright BLUE LED - 24 Volt Whip w/ 10" X 12" Flag - Threaded Base	2400 652
38	8' Bright ORANGE LED - 24 Volt Whip w/ 10" X 12" Flag - Threaded Base	2400 653
39	8' Bright RED LED - 24 Volt Whip w/ 10" X 12" Flag - Threaded Base	2400 654
40	8' Bright WHITE LED - 24 Volt Whip w/ 10" X 12" Flag - Threaded Base	2400 655
41	Quick Mount (QM2)	2400 610
42	Universal Magnetic Mount KIT	2400 666
43	Empty Handler Mount	1 1 98 3776
44	Loaded Handler Mount	1 1 98 3875
45	Universal Magnetic Mount	1 1 98 3872



CAB ACCESSORIES

#	Description:	Part #:
1	CB Antenna (<i>This Is Used When Customer Installs Their Own CB</i>)	I 1 98 3506
2	24V CB Radio with Antenna	I 1 98 3507
3	Cobra Classic CB Radio	I 1 98 3508
4	12 VDC Power Outlet (Mounts In Dash Panel)	2326 148
5	AM/FM Radio (Bluetooth)	I 1 98 3511
6	24/12 Converter (Mount On Dash)	I 1 98 3513
7	24/12 Converter (Open Operator Only)	I 1 98 3514
8	Keytroller	I 1 98 3515
9	Start Manager Circuit	I 1 98 3516
10	Keytroller with Operator Present In Seat	I 1 98 3517
11	Steer Wheel Spinner	2485 005
12	Air Conditioner (X180-360) (XH300-400L)	I 1 98 3540
13	Single Cab Fan (24 Volt)	I 1 98 3552
14	Dual Cab Fan (24 Volt)	I 1 98 3553
15	Sun Visor	I 1 98 3562
16	Skylight Pull Screen	I 1 98 3563
17	Sun Visor / Pull Screen	I 1 98 3564
18	Clipboard Stand	I 1 98 3566
19	Clip Board Stand	I 1 98 3644
20	CB Radio	I 1 98 3617
21	<i>This is used when the customer installs their own CB radio.</i>	I 1 98 3506
22	Dual Cab Circulation Fans	I 1 98 3635
23	4 Cab Circulation Fans	I 1 98 3636
24	Sun Visor	I 1 98 3641
25	Skylight Pull Screen	I 1 98 3642
26	Sun Visor / Skylight Pull Screen	I 1 98 3643
27	24V to 240V Inverter (Mount Under Dash)	I 1 98 3590



HORNS

#	Description:	Part #:
1	Trumpet Horn (24v)	I 1 98 3503
2	Dual HELLA® Horns (24 Volt)	I 1 98 3504
3	HELLA HORN KIT (Legacy Cab Only): Includes all components needed to install 24 volt, dual-tone horns to our legacy cabs.	I-1-98-2884
4	HELLA HORN KIT (Dream Cab Only): Includes all components needed to install 24 volt, dual-tone horns to our DREAM cabs.	I-1-98-2883

BOXES & STEPS

#	Description:	Part #:
1	Top Step Exit To Fender	I 1 98 3534
2	Tool Box-Right Side Running Board	I 1 98 3623
3	Dual Tool Box	I 1 98 3535
4	Single Tool Box	I 1 98 3536
5	Tool Box- Stack Strip Storage Box	I 1 98 3624

CAMERAS

#	Description:	Part #:
1	Safety Vision Forward Camera	I 1 98 3497
2	Safety Vision Reverse Camera	I 1 98 3498
3	Safety Forward / Reverse Camera	I 1 98 3499
4	Safety View Fwd / Rev (Mount to DVR)	I 1 98 3500
5	Safety Vision Total View: 3 Color 360° Cameras (Bird's Eye)	I 1 98 3576
6	Forward Color LCD Camera	I 1 98 2062
7	Reverse Color LCD Camera	I 1 98 3485
8	Single Monitor Fwd / Rev Color Camera	I 1 98 3653
9	Dual Monitor Fwd / Rev Color Camera	I 1 98 2076
10	Dash Mount Forward Color Camera	I 1 98 3616
11	Front LCD Monitor Cover	I 0 28 8844
12	Rear LCD Monitor Cover	I 0 28 9983
13	Front/Rear LCD Monitor Cover	I 0 28 8844 & I 0 28 9983



SEATS

#	Description:	Part #:
1	Cloth Seat (Air-Ride) LEGACY	I 1 98 3645
2	Black Vinyl Seat (Air-Ride)	I 1 98 3646
3	Cloth Seat (Air-Ride) DREAM	I 1 98 3647
4	Rider Seat (Enclosed Cab)	I 1 98 3648
5	Rider Seat	I 1 98 2142
6	Black Vinyl Seat (Swivel) (Mechanical Suspension)	I 1 98 3567
7	Gray Cloth Seat (Swivel) (Air Suspension)	I 1 98 3568
8	Back Vinyl Seat (Air Ride)	I 1 98 3569
9	Heavy Duty Black Vinyl Seat (Up To 400-lbs) (Wide Mechanical Suspension)	I 1 98 3570
10	Grey Cloth Seat (Air Ride) (3 Point Seat Belt) (Adjustable Seat Cushion)	I 1 98 3572
11	Rider Seat / Arm Rest Mt	I 1 98 3573
12	Rider Seat / Arm Rest / All Lever	I 1 98 3574



SENSORS & ALARMS

#	Description:	Part #:
1	Weight Scale (TX / TXH)	I 1 98 3509
2	Weight Scale with Alarm	I 1 98 3510
3	Parker Impact Sensor with Log	I 1 98 3521
4	Impact Sensor	I 1 98 3618
5	Proximity Alarm (for X/XH Trucks with 138" Wheelbase)	I 1 98 3575



FIRE PROTECTION

#	Description:	Part #:
1	5# Fire Extinguisher & Mount	I 1 98 3619
2	5# Fire Extinguisher (Fender Mount)	I 1 98 3530
3	5# Fire Extinguisher & Mount	I 1 98 3526
4	5# Fire Extinguisher (Fender Mount)	I 1 98 3530
5	5# Fire Extinguisher (2x) (Fender Mount)	I 1 98 3531
6	10# Fire Extinguisher & Mount	I 1 98 3620
7	10# Fire Extinguisher (Fender Mount)	I 1 98 3532
8	20# Fire Extinguisher	I 1 98 3533
9	20# Fire Extinguisher & Mount	I 1 98 3533
10	ANSUL Wet Fire Suppression System	I 1 98 3583
11	ANSUL Wet Fire Suppression System (Used With Fender Extensions Only)	I 1 98 3584
12	Flourine Wet Fire Suppression	I 1 98 3585
13	LVS 10# Non-Flourinated Fire Suppression	I 1 98 3587
14	AFEX 30# Dry Chemical Fire Suppression System (Used With Fender Extensions Only)	I 1 98 3586
15	AFEX 30# Dry Chemical Fire Suppression System	I 1 98 3589



GUARDS

#	Description:	Part #:
1	Hydraulic & Fuel Tank Lock	1737 005
2	Fender Side Extension (X180S-360L) (XH300L-360L) (X90SC)	I 1 98 3527
3	Mud Flaps / Side Extensions (X180S-360L) (XH300L-360L) (X90SC) (X4030)	I 1 98 3528
4	Mudflaps / Side Extensions (X4030)	I 1 98 3621
5	Mudflaps / Side Extensions	I 1 98 3622
6	Bottom Wire Guard (Exhaust)	I 1 98 3489
7	Bottom Wire Guard (Hydraulic Lines)	I 1 98 3537
8	Front Poly Guard without Wiper (Open Operator Base Only)	I 1 98 3543
9	Front Poly Guard with Wiper (Open Operator Base Only)	I 1 98 3544
10	Front Windshield Poly Armor	I 1 98 3545
11	Rear Windshield Guard (2" Wire Mesh)	I 1 98 3554
12	Top AC Guard (2" Wire Mesh)	I 1 98 3556
13	Skylight Guard (2" Wire Mesh)	I 1 98 3557
14	Front Windshield Guard (Vertical Bars)	I 1 98 3558
15	Front Windshield Guard (2" Wire Mesh)	I 1 98 3559
16	Bottom Door Glass Guards	I 1 98 3565
17	Front Windshield Guard (Expanded Metal)	I 1 98 3560
18	Front Windshield Guard (Lexan)	I 1 98 3561
19	Rear Windshield Guard (2" Wire Mesh)	I 1 98 3554
20	Top Glass Guard with Straight Bars	I 1 98 3637
21	Cab Top & AC Guard (2" Wire Mesh)	I 1 98 3638
22	Top Glass Guard (2" Wire Mesh)	I 1 98 3639
23	Front Lexan Guard	I 1 98 3641
24	Front Windshield Guard (2" Wire Mesh)	I 1 98 3487
25	Drive Tire Shield: 1200 x 20 tire shield that bolts on to the drive axle tires.	I-1-98-2969
26	Steer Tire Shield: 1200 x 20 tire shield that bolts on to the steer axle tires.	I-1-98-2968
28	Drive Tire Shield: 1400 x 25 tire shield that bolts on to the drive axle tires.	I-1-98-3316
27	Steer Tire Shield: 1400 x 25 tire shield that bolts on to the steer axle tires.	I-1-98-3315



SERVICE STANDBY KITS

#	Description:	Part #:
1	DEUTSCH CONNECTOR TOOLS: A Deutsch crimp tool and a full set of Deutsch extractors.	I-1-98-0903
2	DEUTSCH CONNECTOR KIT w/ TOOLS: A Deutsch crimp tool, a full set of Deutsch extractors and a full variety of different size pins and sockets.	I-1-98-0953
3	DEUTSCH CONNECTOR KIT PINS & SOCKETS: A full variety of different size pins and sockets.	I-1-98-2910
4	HD DEUTSCH CONNECTOR KIT: Used for 14-18ga as well as some 6ga wire connections (Male and female terminals with 14, 23, 31 for 14-18ga. A 14pin with a single 6ga, and a 6pin with two 6ga terminals.)	I-1-98-3721
5	FUSE & HOLDER KIT: A variety of ATO style blade fuses and fuse holders.	I-1-98-3722
6	DT DEUTSCH CONNECTOR KIT: Used for 14-18ga wire connections. (Male and female terminals with 2, 3, 4, 6, 8, and 12 pin connectors as well as 3, 4, 8, and 12 pin flange mount connectors.)	I-1-98-3723
7	DTP DEUTSCH CONNECTOR KIT: Used for 12ga wire connections. (Male and female terminals with 2pin, 4pin, and 4pin flange mount connectors.)	I-1-98-3724
8	DTM DEUTSCH CONNECTOR KIT: Used for 18-22ga wire connections. (Male and female terminals with 2, 3, 4, 6, 8, and 12 pin connectors with 2 different key-way versions of the 12 as well as a flange mount 12.)	I-1-98-3725
9	HYDRAULIC FITTING KIT	I-1-98-0465
10	FOUR BOLT FLANGE O-RING KIT: Includes 70 o-rings for 568 flange total, ranging in size from ½ inch to 2 ½ inches.	4019-801
11	O-RING KIT: 212 Buna Nitrile 90 Durometer o-rings.	4019-802
12	REFILL O-RING KIT: A total of 80-90 Durometer o-rings	I-1-98-1709
13	D81 AXLE TOOL KIT: Includes all tools needed to service D81 axles	I-1-98-2627



#2

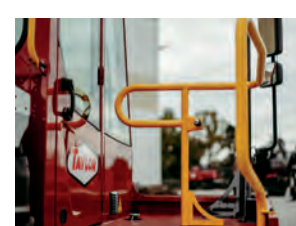


#5



TERBERG SPECIALTY PARTS

#	Description:	Part #:
1	YT220 Trainer Seat	I-1-98-3812
2	Adjustable Steering Column	I-1-98-3798
3	5th Wheel Speed Limit	I-1-98-3806
4	Additional Handrails	I-1-98-3799
5	Cabin Protection Frame	I-1-98-3800
6	Heavy Duty Tow Coupling - 40 mm	I-1-98-3805
7	Heavy Duty Tow Coupling - 50 mm	I-1-98-3801
8	LED Headlights	I-1-98-3802
9	Radio	I-1-98-3803
10	Radio Converter	I-1-98-3804





(GT) LIGHTS

#	Description:	Part #:
1	Oval LED Safety Blue Light (12-110V)	GT5232
2	Oval LED Safety Blue Light (12-48V)	GT05620
3	Wire Harness	GT5233
4	Bracket	GT02950
5	Square LED Value Light 1800L Square (10-80V)	GT5234
6	LED Stop/Tail (24-48V)	GT5235
7	LED Stop/Tail (12V)	GT5236
8	LED Stop, Tail, & Turn (12V)	GT5271
9	Par 36 Steel Work Lights (12V)	GT5237
10	Par 36 Heavy Duty Work Lights (12V)	GT5238
11	Par 36 Rubber Cased Lamps (12V)	GT5239
12	LED Safety Light - Model 793: 6" x 2" LED Warning Light (BLUE)	GT5240
13	Strobe Warning Light (BLUE)	GT5241
14	LED Strobes (BLUE) (12-80V) 5 LED 60+6 quad fpm 5.16" X 2.38"	GT5242
15	LED Strobes (BLUE) (12-80V) 5 LED 60+6 quad fpm 5.16" X 2.38"	GT5243
16	LED Strobes (BLUE) (12-72V)	GT5244



(GT) FANS

#	Description:	Part #:
1	Single Speed 12 Volt Fan (Variable Speed Knob)	GT04089
2	Single Speed 24 Volt Fan (No Switch)	GT04088
3	Single Speed 36 Volt Fan (No Switch)	GT5267
4	2-Speed 48 Volt Fan (Switch)	GT5268
5	2-Speed 36 Volt Fan (Switch)	GT5269
6	2-Speed 12 Volt Fan (Switch)	GT5270
7	2-Speed 12 Volt Fan (Switch)	GT04591



(GT) MIRRORS

#	Description:	Part #:
1	5" Flat Round (Bracket Included)	GT5254
2	5" Flat Round	GT5255
3	8-1/2" Round	GT5256
4	Mirror Universal Bracket	GT5253
5	3 7/8" X 6 1/4" Flat	GT5257
6	4 1/2" X 7 1/4" Convex	GT08991
7	4 1/2" X 7 1/2" Flat	GT5258
8	4 7/8" X 8" Flat	GT5259
9	5 1/2" X 7 1/2" Convex	GT5260
10	5 1/2" X 10" Flat Rear	GT5261
11	6 1/2" X 10" Flat Rear	GT5262
12	7 1/2" X 13" Flat Rear	GT01070
13	Acrylic Mirror (Bracket Included)	GT5263
14	Acrylic Mirror	GT5264
15	9" Dome Mirror (Tape Mounting)	GT5265
16	9" Dome Mirror (Magnetic Mounting)	GT5266



(GT) ALARMS & HORNS

#	Description:	Part #:
1	Smart Alarms 77- 97 dBA (12-48V)	GT5116
2	Smart Alarms 82-107 dBA (12-48V)	GT5246
3	Smart Alarms 82-107 dBA (12-24V)	GT5247
4	Horn 107 dBA (24-48V) (3-Terminal)	GT5245



(GT) SEAT BELTS

#	Description:	Part #:
1	ORANGE 70" w/ switch NON RETRACTABLE	GT5248
2	ORANGE 50" RETRACTABLE	GT5249
3	ORANGE 50" RETRACTABLE w/ switch (Non-Cinching)	GT06287



(GT) SAFETY ACCESSORIES

#	Description:	Part #:
1	Flex-Tred Anti-Slip Tape Black 36" x 10'	GT5250
2	Digital Tilt Indicator	GT03826
3	Body Harness	GT5251
4	Universal Size Full-Body Harness Only	GT5252



(GT) RAIN CAPS & SHIELDS

#	Description:	Part #:
1	Tinted & Non-Tinted Rain Caps (Various Sizes) INQUIRE for sizes available	INQUIRE



Whether in harbor or airport applications, in industry or the logistics sector – the requirements could not be more different. Speed, distance, weight, temperature, humidity, surface conditions and many other factors vary according to the operation, these factors make your business individual.

Continental tires provide comfort on all surfaces and therefore offer the protection of people, goods and material in many transporting and lifting tasks. The tire's benefits are good riding properties, good traction capability and effortless handling. Therewith Continental's Pneumatic Tires are typically recommended for forklift trucks, trailers for in-plant applications, industrial tractors, airport apron vehicles, heavy load transport vehicles.

Special Challenges Call For Special Solutions

We have responded to these conditions and have adapted our products to your unique set of requirements. Our comprehensive product range has evolved from this. We not only offer you a solution to meet your every requirement, but also adapt effectively to every challenge.



CONTINENTAL TIRES

#	Part #	Description	Size	Ply	Outside Diameter	Overall Width	Weight
1	2693-466	10.00R20 166A5 TL ContiRT20	10.00 R 20	18	40.00	10	187.45
2	2693-154	10.00-20 166AS TL IC40 REINFORCED	10.00-20	18	41.7	11.4	167.7
3	2693-181	S 10.00-20 F 127D-Z AIRFIX	10.00-20	NA	NA	NA	7.06
4	2693-179	12.00-20 176A5 TL IC40 REINFORCED	12.00 - 20	20	44.02	12	216.53
5	2693-993	12.00R20 176A5 TL ContiRT20	12.00 R 20	20	44.02	12	228.40
6	2694-209	12.00R20 176A5 TL CONRAD HT1	12.00 R 20	20	44.02	12	228.40
7	2693-168	12.00R24 178A5 TL ContiRT20	12.00 R 24	NA	47.99	12	340.75
8	2693-169	12.00R24 178A5 TT ContiRT20	12.00 R 24	NA	47.99	12	340.75
9	2693-180	S 12.00-20 F 127D-Z AIRFIX	12.00-20	NA	NA	NA	8.16
10	2693-170	14.00R24 193A5 TL ContiRT20	14.00 R 24	NA	52.01	14	538.81
11	2693-171	14.00R24 193A5 TT ContiRT20	14.00 R 24	NA	52.01	14	538.81
12	2693-157	14.00-24 28PR C/M+ IND-4 TT CO	14.00-24	28	55.31	15.5	418.91
13	2693-158	14.00-24 28PR C/M+ IND-4 TT CO	14.00-24	28	55.31	15.5	418.91
14	2693-176	S 14.00-24 F 140D-64 AIRFIX	14.00-24	NA	NA	NA	14.33
15	2693-114	DM+TT SMOOTH	14.00X24	28	53.9	15.1	403.65
16	2693-172	16.00R25 200A5 C/M RAD IND TL	16.00 R 25	NA	57.01	16	679.18
17	2693-159	16.00-25 32 PR C/M+ E4IND TL CO	16.00-25	32	61	18	599
18	2693-162	B 170-15 IND. REINFORCED AIRFIX	170-15	NA	NA	NA	3.15
19	2693-173	18.00R25 207A5 C/M RAD IND TL	18.00 R 25	NA	60.98	18	946.89
20	2693-175	18.00R33 214A5 C/M Rad IND TL	18.00 R 33	NA	69.02	18	1096.86
21	2693-160	18.00-25 40PR D/M+ E4 IND TL	18.00-25	40	60.51	18.75	955
22	2693-161	18.00-25 40PR C/M+ E4 IND TL	18.00-25	40	66.67	20.3	891.25
23	2693-312	18.00-33 40PR C/M+ E4 IND TL	18.00-33	40	74	20.67	1124.72
24	2693-182	B 190-20 IND. REINFORCED AIRFIX	190-20	NA	NA	NA	4.69
25	2693-997	TSR 20" RADIAL TL REINFORCED	20"	NA	NA	NA	20.73
26	2693-177	B 220-24 REINFORCED AIRFIX	220-24	NA	NA	NA	7.28
27	2693-155	B 230-20 IND. REINFORCED AIRFIX	230-20	NA	NA	NA	6.69
28	2693-152	V3.03.3 FLAT BASE VALVE	3.03.3	NA	NA	NA	0.1
29	2693-163	8.25R15 153A5 TL CONRAD HT1	8.25 R 15	18	31.50	8.25	102.83
30	2693-150	8.25R15 153A5 TL ContiRT20	8.25 R 15	18	31.50	8.25	98.80
31	2693-310	8.25-15 18PR 153A5 TT IC40	8.25-15	18	27.9	8.8	72
32	2693-151	TSR 8.25R15 TL (6.50)	8.25R15	NA	NA	NA	13.34



TAYLOR EXCLUSIVE Super Grip Tires

Taylor exclusive lift truck tires are designed to meet the needs of material handling equipment in a wide range of applications. These tires are produced to the same quality and performance standards that Taylor Machine Works® has long been known for. Super Grip®, in conjunction with Taylor's engineering department, has worked to achieve a line of forklift tires that has been proven to be far superior than its nearest competitor.

Super Grip® pneumatic tires use full dimension sizing as well as rim guard protection. This increases the lateral strength and life span of the tire, reducing downtime and operating costs associated with industrial equipment. Load carrying capacity is always critical, however impact and bruise resistance are equally important. These tires use full dimension sizing as well as rim guard protection. There is more rubber in the tread over other brands, providing longer wear and more gripping power throughout the life of the tire.



BETTER GRIP - FEWER FLATS

10 years tested and “Big Red” proven to handle the Big Load!

Pneumatic Rim Guard Tire Size	Ply Rating	Outer Diameter	Section Width	Tread Width	Tread Depth	Part Number
825-15	16	33.7	9.1	7.7	41/32	2694-372
1000-20	16	43.3	11.9	10.4	56/32	2694-370
1200-20	24	46.2	13.2	11.5	64/32	2694-371
1200-24	24	51.2	13.1	11.5	65/32	2693-059
1400-24	28	55.8	15.2	13.8	73/32	2693-060
1400-25	28	55.9	15.2	13.8	74/32	2694-255
1600-25	28	61	17	15.3	80/32	2693-071
1800-25	40	65	20.7	18.4	87/32	2693-065
825-15 L5 SM	24	34.1	10.2	9.2	65/32	2694-374
1000-20 L5 SM	18	43.2	11.8	10.6	72/32	2693-700
1200-20 L5 SM	28	46.2	13.0	11.4	85/32	2694-256
1400-24 L5 SM	28	55.8	15.2	14.2	97/32	2693-070
1400-25 L5 SM	28	55.8	15.2	14.2	97/38	2693-072
1800-25 L4 SM	40	65.8	21.2	18.6	74/32	2693-701
1800-25 L5 SM	40	64.3	21	18.6	105/32	2694-261
2100-25 L5 SM	40	70.8	24.3	21.8	124/32	2693-069
Solid Shockmaster Tire Size	Ply Rating	Outer Diameter	Section Width	Tread Width	Tread Depth	Part Number
825-15X6.5		33.1	8.5	8.1	117/32	2694-437
Solid Black Tire Size	Ply Rating	Outer Diameter	Section Width	Tread Width	Tread Depth	Part Number
825-15X6.5		33.1	8.5	8.1	117/32	2694-465
1000-20x7.0		40.7	9.7	8.9	116/32	2694-467
1100-20x8.0		40.7	9.6	8.8	116/32	2694-468
1200-20x8.0		45.9	13	12.2	123/32	2694-469
Solid X-15 Tire Size	Ply Rating	Outer Diameter	Section Width	Tread Width	Tread Depth	Part Number
825-15X6.5		33.2	9.4	8.5	94/32	2694-581

WARNING: DO NOT EXCEED OEM MANUFACTURER'S RECOMMENDED PSI;
CONSULT OEM & RIM MANUFACTURER WHEN NECESSARY.



BETTER WEAR
LONGER SERVICE
SUPERIOR TRACTION



ADVANCED COMPOSITION: Exceptional cut and chip resistance produces outstanding wear and increased durability.

PROVEN TREAD DESIGNS: Non-directional patterns provide the traction needed on rough and rocky underground surfaces.

OPTIMIZED RUBBER-TO-VOID RATIO: The enhanced balance between cut-resistance and traction works to increase tread life and resilience.

DUAL BEAD CONSTRUCTION: Balances the required strength of the bead and carcass while providing enhanced performance in high-pressure applications, and is ideal for foam-filled applications, helping to lower the overall cost of operation.

INDUSTRIAL SPEC (ID) COMPOUND*: Designed to deliver long hours in hostile conditions, our Industrial Spec (ID) Compound is specially formulated to be highly cut resistant and to reduce heat generation to extend the life of your tires and reduce your tire-related costs. (*Does not apply to all tires shown in this brochure.)

CROSS-PLY TECHNOLOGIES: Bias industrial tires are engineered with heavy gauge plies that are cross-layered at an intricate degree. We've created reinforced sidewalls that give your stackers, top picks and side loaders extra stability.

PROTECTIVE BELT PACKAGE: Radial tires are designed to withstand the rigorous operation of intermodal and port operations with a high-strength protective belt package directly under the tread surface which enables our tires to absorb impacts and deflect damaging blows, delivering constant performance and consistent service.



YOKOHAMA BIAS OFF-THE-ROAD (OTR) TIRES

Y67-E3 Tire Size	Ply Rating	Outer Diameter	Tread Width	Tread Depth	Ship Weight	Part Number
14.00-25	24	53	15	35	291.8	2694-239
18.00-25	32	63	20	49	557.9	2694-236
Y67 Tire Size						
12.00-20	18	44.7	12.8	32	196.3	2694-228
12.00-20	24	44.7	12.8	32	213.5	2694-294
12.00-20	28	44.7	12.8	32	237.9	2693-945
18.00-25	40	63.8	20.1	49	781.6	2694-291
Y69 Tire Size						
18.00-25	40	64.5	21.1	74	1003.1	2694-229
18.00-25	40	65	21	105	1074.2	2693-946
Y523 Tire Size						
18.00-25	40	65	20.4	77	831.9	2694-289
WARNING: DO NOT EXCEED OEM MANUFACTURER'S RECOMMENDED PSI; CONSULT OEM & RIM MANUFACTURER WHEN NECESSARY.						



Y67: For hauling over rock, coal and log-strewn terrain. Tough tread offers resistance to cuts and snags. Less heat buildup enables smooth running over longer distances than the deep tread types.

Features & Benefits:

- Cut-protection compound provides exceptional durability
- Optimal rubber-to-void ratio provides better stability
- Lower cost-per-hour
- Some sizes include steel breakers for extra protection

Y69: Engineered to withstand heavy loads borne by industrial vehicles, including forklifts and straddle carriers, while providing lower cost-per-hour operation. This tire has a large tread width and ground contact area for good traction on paved ground surfaces.

Features & Benefits:

- Optimized tread volume & ID spec handles heavier loads
- Wider treadface provides better ground contact and stability
- Compound is optimized for long wear on concrete and asphalt surfaces
- Deep tread and reinforced bead and sidewall increase durability in tough operations
- Special under-tread compounds and over-ply casing resist heat generation to provide longer, more durable casing life
- Outstanding retreadability

Y523: Specially designed for use under highly abrasive conditions. Large ground contact area of wide, deep double chevron 'flush' pattern provides good cut resistance and long service life.

Features & Benefits:

- Extra deep tread
- Better tread cut and impact resistance
- High tensile steel breaker



DIESEL Fuel Cleaning

What's in your fuel tank?



www.fuelscrubbing.com

Scan to watch the video



DIESEL

Fuel Cleaning



Is Your Fuel Clean?



DIESEL SCRUBBING & FUEL MAINTENANCE

Our 8-step preventive maintenance program provides complete peace of mind when it comes to their fuel quality.

- 1. STERILIZE:** Fuel is treated with EPA registered micro-biocide to kill all microbial growth in the fuel, fuel water interface, and fuel tank.
- 2. CLEAN:** Fuel and fuel tanks are cleaned to remove all water, contaminants, bacteria, and fungi from the fuel. Fuel is circulated in a manner to wash the walls of the fuel tanks. Demulsifiers are used to remove water from the fuel.
- 3. FILTER:** Fuel is filtered through oil/water separators and fuel filters to purify the fuel. This filtering process removes all water and contaminants to a particulate size of 10 microns or smaller.
- 4. POLISH:** Fuel is polished through a twin pack filter assembly with a Beta Rating of 5 micron, meeting all new Tier 4 Final specification.
- 5. TREAT:** Polished fuel is treated with a diesel fuel treatment that contains: lubricity agents, cetane improvers, oxygen scavengers, corrosion inhibitors, and stabilizers.
- 6. ANALYZE:** A fuel sample is taken after the tank cleaning and a visual analysis will ensure fuel is clean and ready for use. (Independent Laboratory Analysis are available for documentation of clean fuel and NFPA 110 specification.)
- 7. MONITOR:** Free fuel samples are available every 180 days for a visual analysis with written reports for the maintenance department or upper management.
- 8. WARRANTY & GUARANTEE:** We guarantee clean fuel and clean fuel tanks, free of microbial growth for 90 days. If fuel gets dirty again for any reason within 90 days of the initial cleaning, we will clean it again at no charge. Additionally, if independent laboratory analysis was requested, we guarantee your fuel will receive a Pass rating. If your fuel fails, we will clean it again and retest the fuel at no charge.



To Find Out More Contact Your Local
SERVICE CENTER

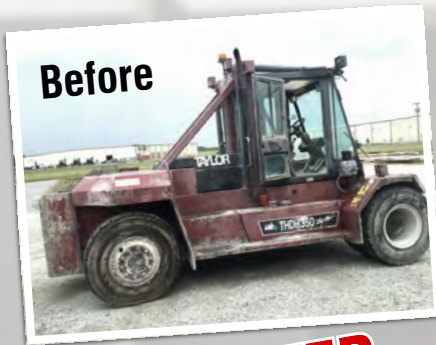
Ask About Our
FREE Fuel Quality Test.
www.fuelscrubbing.com



OUR EXCLUSIVE
REMANUFACTURING
PROCESS ON ANY USED TAYLOR EQUIPMENT

COMPLETELY
REMANUFACTURED
TO A LIKE NEW CONDITION

**CAN YOU TELL
THE DIFFERENCE?**



AFTER



TAKING CARE OF OUR CUSTOMERS **IS PRIORITY ONE!**

www.taylorsuddenservice.com • www.taylorbigredforklifts.com

COMPLETELY REMANUFACTURED TO A LIKE NEW CONDITION

The Benefits of Remanufacturing:

Your newly remanufactured lifttruck will be in like new condition, ready to give you like new performance with the same reliability and durability you expect from a Taylor lifttruck.

The Process:

1. Machine arrives at rebuild center:

- Machine is steam cleaned
- Basic inspection & logged into system
- Machine is slotted for start of rebuild process

2. Machine is brought into shop:

- Rebuild area is assigned
- Service technician is assigned
- Parts are put on order for rebuild

3. Machine is disassembled:

- Parts to be reused are placed on pallets
- Parts to be replaced are scrapped

4. Body and Frame Assembly:

- Frame is sand blasted to bare metal
- Frame is inspected for cracks & structural damage
- Repairs are made if needed
- Frame is primed for reassembly
- Frame is returned to rebuild area

5. Mast:

- Disassembled & inspected
- Repairs made if needed
- Mast cylinders rebuilt or replaced as needed
- Mast rebuilt
- New rollers, chain, anchors, bushings & pins
- New paint

6. Carriage:

- Disassembled & inspected
- Repairs made if needed
- Cylinders rebuilt or replaced as needed
- Carriage rebuilt
- New rollers, bushings & pins
- New paint

7. Cab:

- Disassembled
- Rebuilt to new condition
- New wiring, glass, gauges & seat

What is Remanufacturing?

A process in which equipment is returned to 100% of the Original Equipment Manufacturer's (OEM) Standards. All components are returned to the latest zero hour OEM specifications using our factory quality controlled process in which:

Key Benefits:

- Substantial Cost Savings
- No New Operator Training Required
- Same Technology & Operation
- Your Existing Parts Inventory is Interchangeable
- Same PM Schedule
- Same Standard Factory Warranty - 1 year or 2000-hrs
See your dealer representative for more information

Cab Continued:

- New valves, hose & matting
- Controls rebuilt or replaced as needed

8. Drive Axle:

- Disassembled & inspected
- Repair and replace components as needed
- New bearings, seals & brakes

9. Steer Axle:

- Disassembled & inspected
- Repair and replace as needed
- New bearings & seals
- Cylinder rebuilt or replaced as needed
- New pins and bushings

10. Engine & Transmission:

- Exchange with rebuilt units
- New wiring, hoses, alternator & starter
- New transmission cooler & hoses
- New cooling package
- Fuel system rebuilt

11. Hydraulic System:

- All new valves
- All new pumps
- All new hoses
- Tilt cylinders rebuilt or replaced as needed

12. Electrical:

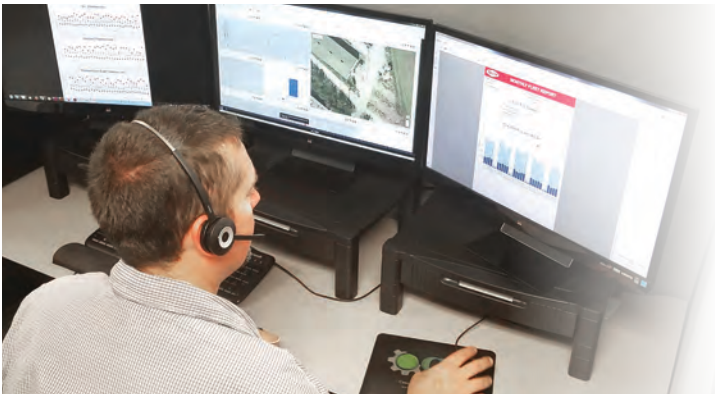
- All new wiring.
- All new electrical components

13. Reassembly of Machine:

- Complete factory inspection
- New paint & decals

14. Prepare for return to customer:

- Final machine operations inspection
- Minimum of a 4 hour run time
- Final customer acceptance inspection (C/A)



ANALYTICS & REPORTING

- Optimize Work Flows
- Instant Access to Historical Data & Time Based Reporting
- Compare Overall Fleet Performance
- Detailed Performance Data Delivered to Your Fleet Manager



FLUID LEVEL
Diesel Level - 67%
DEF Level - 72%



GPS MAPPING & SITE BOUNDARY MANAGEMENT

- Real-time GPS equipment location on easy-to-use maps
- Ability to Geo-fence an area and receive "Breach" alerts.
- GPS "Breadcrumbs" - Historical trails of where a piece of equipment has been over customized time-frames.
- Easily identify asset location through color coded GPS map pins.

USER-FRIENDLY INTERFACE

TaylorTrak Pro® gives you easy, intuitive access to comprehensive information about your equipment's performance and condition. Plus, with customizable alerts sent directly to a smart device, you're always aware when a critical need arises.

- Accurate, up-to-date information available across multiple platforms (desktop, tablet, smart phone)
- Instant status updates on individual pieces of equipment
- Alert notifications sent via SMS text and email to the proper personnel.
- Customizable alert preferences based on the level of information you require.
- Current status of all engine parameters
- Alert notification of critical engine parameters
- Current fuel level and total fuel usage graphs / reports
- Work vs Idle time graphs / reports



SCHEDULED MAINTENANCE

- Plan & Track Maintenance. Use recommended Taylor Service Intervals or customize to fit your needs.
- Receive alerts to notify you of approaching "scheduled" maintenance
- Track individual machine and fleet maintenance history
- Easy access to your Local Dealer Service Network



Access Control System with OSHA Pre-Shift Checklist
Helpful Features - Simple to Use - Easy Set Up



LIMIT EQUIPMENT ACCESS to Approved Personnel



Control exactly who has access to your equipment



Compatible with existing access cards and key fobs



Helps to ensure that safety checks are completed



Easy to set-up & simple to manage via web portal



Control Access To Your Equipment:

TaylorTrak Access allows you to control who has access to your equipment in two ways:

1. **Unique 4-Digit Key Code:** Using the heavy-duty stainless steel keypad with a programmable 4-digit code, you can allow a user access to your equipment. The TaylorTrak Access system has storage for over 250 unique codes.
2. **Proximity Cards (125 kHz) and Key Fobs:** You can utilize your existing facility access cards or fobs. The TaylorTrak Access system can work with both HID H10301 and EM4100/4001 compatible cards. The system has storage for over 100 unique proximity card numbers.

Simplify Your Daily Safety Checks:

The TaylorTrak Access system ensures, at the start of each shift, proper safety checks get performed.

- The vehicle will not start until the OSHA Pre-Shift Checklist has been completed.
- In the event of a failed safety check, you can choose whether the vehicle:
 - Remains disabled
 - Allowed to start while recording the information
- Information collected:
 - Vehicle number
 - Current vehicle hours
 - Operator ID number
 - All failed questions from the process
 - Timestamps the start and completion of the checklist process



Web Portal Management:

Securely connect all your TaylorTrak Access devices via the TaylorTrak Pro web portal. With TaylorTrak Access managing your operators and material handling equipment has never been easier.

- **Easily manage your fleet with our intuitive dashboard that gives you all the information you need.** From the TaylorTrak Pro web portal, users can easily rename lengthy RFID card numbers to known user IDs of the operators logged into the lift truck.
- **Manage your operators:** add/subtract operators individually or in bulk.

For More Information Contact Your Taylor Sales Representative
www.taylorbigred.com - www.taylorsuddenservice.com



TIRE PRESSURE MONITORING SYSTEM



TIRE WEAR IS ONE OF THE TOP MAINTENANCE COSTS ON INDUSTRIAL LIFT TRUCKS

The most common cause of Excessive Tire Wear is Improper Tire Pressure!



We can help increase the life of your tires by wirelessly monitoring your tire pressure.

NO DEMOUNTING REQUIRED

Contact your local TaylorTrak Pro representative for more information or visit us online at www.taylortrakpro.com



TIRE PRESSURE MONITORING SYSTEM



SENSOR DESCRIPTION:

Automated and Manual Tire Pressure Monitoring serves the same purpose, to reduce tire wear and save you money. Even though manual pressure checks can help reduce some wear, when performed regularly, they can neither monitor nor alert you while the equipment is moving. Tire wear happens while the equipment is moving.

Easy to install without demounting the tire while still providing users with the accurate and continuous tire performance data needed to add safety and savings to their operations.



**SUPERIOR: Monitoring, Reliability
Battery Life, Performance,
& Durability**

SENSOR FEATURES:

- Fully integrated into TaylorTrak Pro for reporting and monitoring
- Sealed units allow full submersion and advanced durability
- Available in both Standard (*regular bore*) and Industrial (*large bore*) options
- External Installation enables easy and fast installation
- Increased reporting during working conditions for unmatched safety
- 8-215 PSI pressure range for comprehensive application use
- Delivers actual tire pressure readings from valve stem
- Not prone to inaccuracies because of tire replacements
- Simple resynchronization after tire replacements
- Compatible on models equipped with MD4 displays





SENSOR-LESS, TAG-LESS TECHNOLOGY

Tracks multiple pedestrians at the same time and requires **No Device or Tag to be worn by the pedestrian.**

Applications which require the use of mobile industrial equipment often require operation in the same areas as pedestrians. The operator of the equipment must know the location of pedestrians at all times while remaining productive and accomplishing their job. Vision Plus™ can aid an operator in this most important task without the need for tags or devices on the pedestrians.

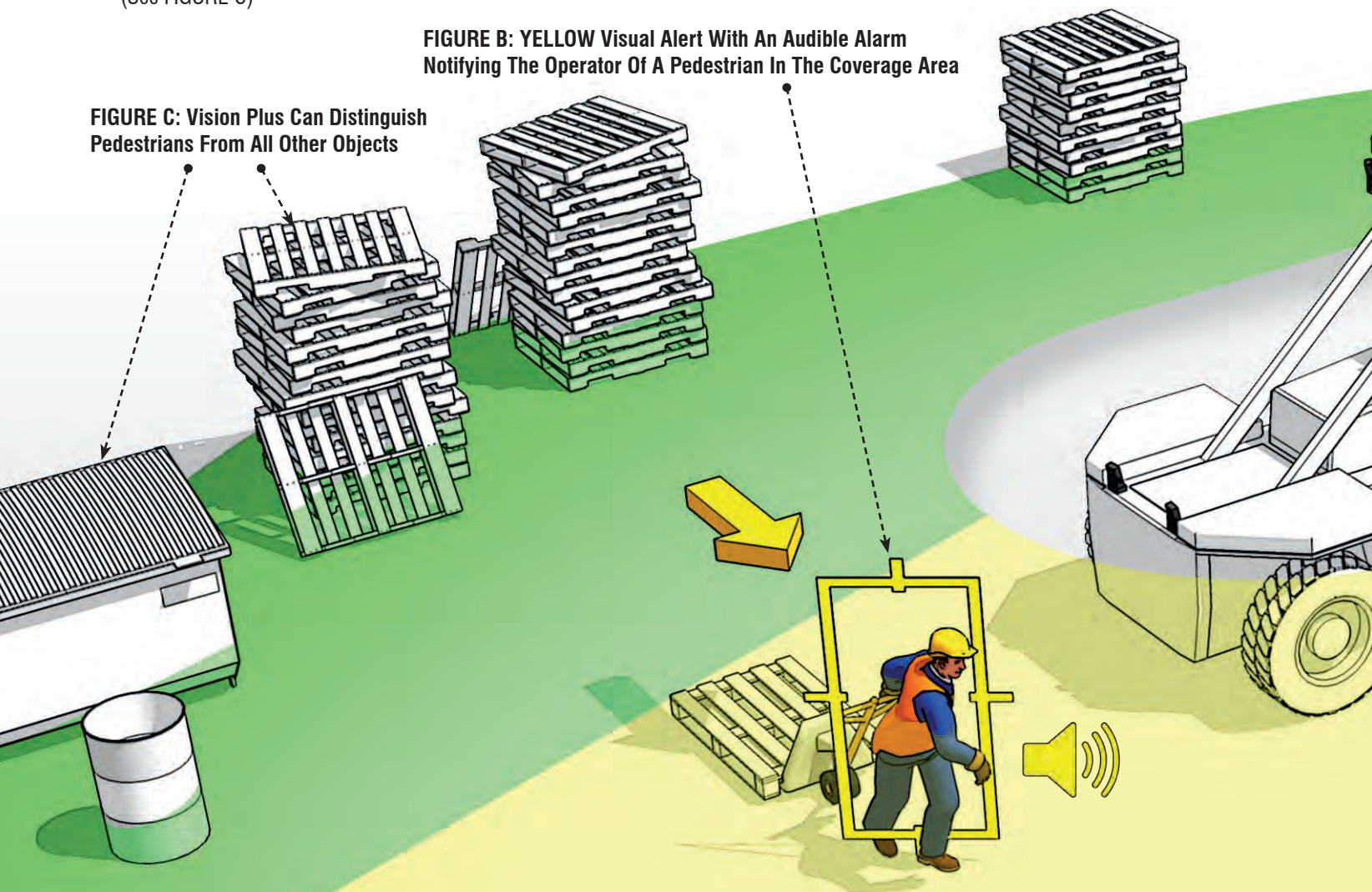
How The Vision Plus™ System Works:

1. As pedestrians enter into the coverage area, an audible and visual alarm is provided to the operator.
2. Next, Vision Plus™ begins to track the pedestrians and predict their paths.
3. Vehicle and pedestrian tracking are combined to determine potential collisions. If a collision is predicted, alarm intensity increases and a Red In-Path alert is issued notifying the operator of this crucial information. (See FIGURE A)
4. Vision Plus™ continues to monitor pedestrians and their paths until the pedestrians are no longer within the coverage area. (See FIGURE B)
5. An internal warning system which combines vehicle speed, vehicle direction, and pedestrian location aims to reduce the number of alerts to the operator making the alerts more effective.
6. The Vision Plus™ system can distinguish pedestrians from all other objects, track the movement of pedestrians and give this functionality without the need for tags or transmitters to be worn by the pedestrians. (See FIGURE C)



FIGURE B: YELLOW Visual Alert With An Audible Alarm Notifying The Operator Of A Pedestrian In The Coverage Area

FIGURE C: Vision Plus Can Distinguish Pedestrians From All Other Objects



Real-Time Information:

Vision Plus™ provides the operator of mobile equipment with real-time information concerning the location and tracking of pedestrians in the operating area around the equipped vehicle. Mobileye's unique artificial vision technology enables the Vision Plus™ system to ignore non-pedestrian obstacles significantly reducing the number of alarms to the operator and to bystanders. This functionality, unique to the Vision Plus™ system, ensures that only the most important information is provided to the operator.

State-of-the-Art Technology:

Ergonomic display of information both audibly and visually, industrial grade camera enclosures and hardware, and state of the art sensor-less, tag-less technology combine to provide a pedestrian detection aid that will add to the operator's practice of clearing the area with direct vision.



Multi-Camera Coverage
Up To 360°



4-Zone Displays
(Vision Plus™ Integrated Display Shown)



Industrial Grade Components
Weather Sealed For Long Life

The Vision Plus System Combines Vehicle Speed, Vehicle Direction And Pedestrian Location To Reduce The Number Of Alerts To The Operator, Making The Warnings More Effective.

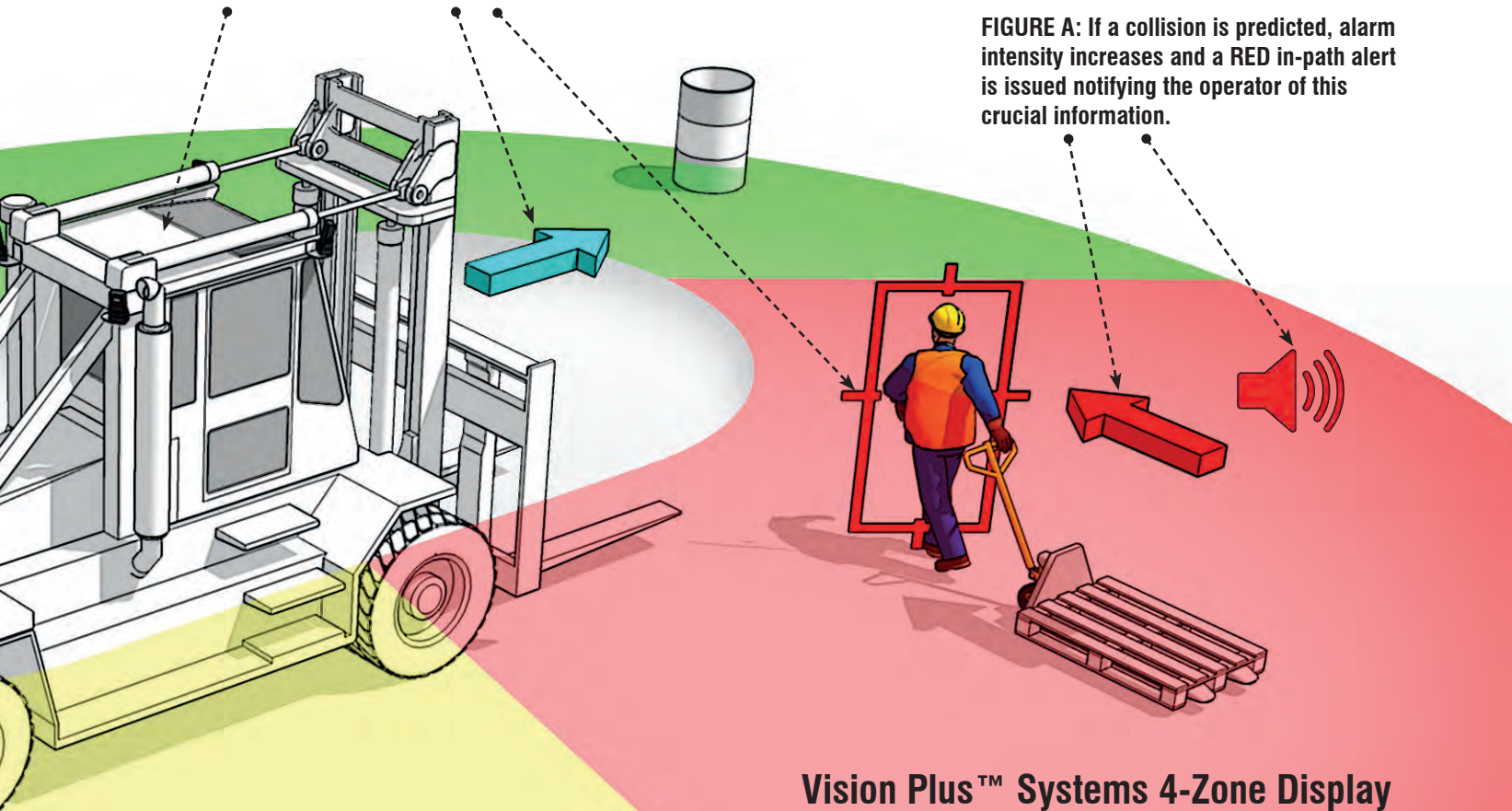


FIGURE A: If a collision is predicted, alarm intensity increases and a RED in-path alert is issued notifying the operator of this crucial information.

Vision Plus™ Systems 4-Zone Display

Each zone consists of one of the following alerts:

Non-Alert

YELLOW: Pedestrian Present Alert

RED: Pedestrian In-Path Alert

Contact your local distributor for more information or visit us at www.visionplussafety.com

VISIONTM PLUS

POWERED BY MOBILEYE[®]



Vision PlusTM



Vision PlusTM Pro (MD3)



Vision PlusTM Integrated

(only available on Taylor X-Series Trucks with MD4)

CHOOSE YOUR COVERAGE AREA

Vision Plus can be installed on virtually any type of off-highway mobile equipment. Different types of equipment operate in various applications and have unique requirements. Your application and equipment use is specific to your needs. Use the chart below to help in making your coverage area decision.

COVERAGE AREAS



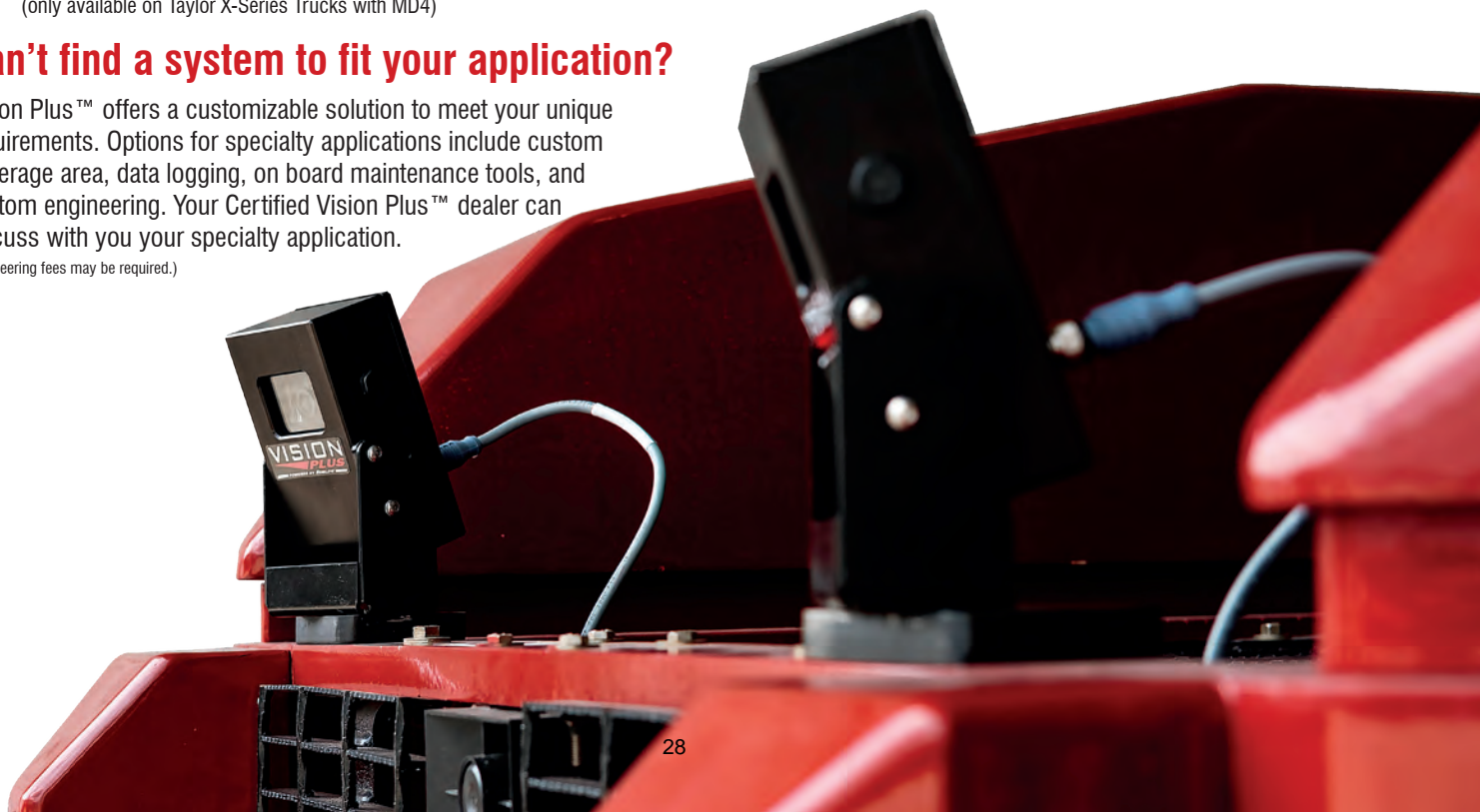
Sample Equipment:	Rear 90°	Rear 180°	Extended 180°	Maximum (up to) 360°
Articulating Chassis +				
Loaders	✓	✓	✓	
Tractors	✓	✓	✓	
Forklifts	✓	✓	✓	
Compactors	✓	✓	✓	
Rear Axle Steering ++				
Forklifts		✓	✓	✓
Tele-Handlers		✓	✓	✓
Intermodal Handlers		✓	✓	✓
Front Axle Steering +++				
Tow Trucks	✓	✓	✓	✓
Mobile Cranes	✓	✓	✓	✓
Concrete Mixers	✓	✓	✓	✓
Agricultural Tractors	✓	✓	✓	✓
Tracked Vehicles ++++				
Excavators	✓	✓	✓	✓
Bulldozers	✓	✓	✓	✓
Skid Steer Loaders	✓	✓	✓	✓

+ All Vision Plus cameras must be mounted such that there is no relative movement between any of the cameras. When cameras are mounted on the rear portion of an articulated chassis, no cameras can be mounted on the front portion.
 ++ Rear axle steer vehicles are highly maneuverable. Minimum 180° coverage is recommended except on very small vehicles.
 +++ Vehicles with large implements or attachments may preclude coverage due to blockage of camera view.
 ++++ Vehicles with large front end implements or attachments may preclude coverage due to blockage of camera view.

Can't find a system to fit your application?

Vision PlusTM offers a customizable solution to meet your unique requirements. Options for specialty applications include custom coverage area, data logging, on board maintenance tools, and custom engineering. Your Certified Vision PlusTM dealer can discuss with you your specialty application.

(Engineering fees may be required.)



RENTAL GENERATOR FLEET



GENERATOR RENTAL SOLUTIONS AVAILABLE 24/7

Taylor Sudden Service offers a vast rental generator fleet starting at 20kW to provide reliability, optimum performance, and critical power for emergency, commercial, industrial, or construction needs. Our experienced staff can assist you with rental rates, availability, and other rental questions you may have.



Taylor Sudden Service offers rental generators for any application where dependable power is required. Whether on a construction site or as a temporary power solution, we have the right generator for you. We can meet any emergency, temporary, or backup power requirements for your construction or event needs.

(662) 773-8056 | www.taylorsuddenservice.com



FROM CRISIS TO CONSTRUCTION, YOU CAN DEPEND ON TAYLOR SUDDEN SERVICE'S RENTAL GENERATORS

Easy Mobile Delivery

All of our rental generators are trailer mounted for ease of towing and transporting.

Many Different Size Units

Starting at 20kW, we offer a variety of solutions to meet any demand you may have. Ask any of our representatives for help in sizing a rental generator to meet your specific job or application.

Self Contained

Everything you need for power is onboard, built-in fuel tanks, cable hook-ups, and easy-to-use controls.

Flexible Rate Plans

We offer daily, weekly, or monthly rates. Our turn-key rental generator package can include the generator, cables, hauling, refueling, and scheduled maintenance.

Taylor Sudden Service offers rental generators for any application where dependable power is required. Whether on a construction site or as a temporary power solution, we have the right generator for you. We can meet any emergency, temporary, or backup power requirements for your construction or event needs.



SCAN HERE TO BROWSE
AVAILABLE RENTAL UNITS



SCAN HERE TO FIND
YOUR NEAREST LOCATION

(662) 773-8056 | www.taylorsuddenservice.com





24/7
Parts

www.taylorsuddenservice.com
Call: (662) 773-8056

01
02
03
04
05
06
07
08
09
10
11
12
13
14
15
16
17
18
19
20
21
22
23
24
25
26
27
28
29
30
31
32
33
34
35
36
37
38
39
40



04/18/24

Taylor Sudden Service
3637 North Church Avenue
Louisville, MS 39339

Call: (662) 773-8056

www.taylorsuddenservice.com