

COMPLETE PRODUCT LINE

BROCHURE: 2025-2026



FAITH - VISION - WORK





SCAN for MORE



DESIGN
ENGINEER
BUILD & SERVICE
...It's What We Do!

WE ARE TAYLOR

DEPENDABLE HIGH CAPACITY LIFT TRUCKS

For nearly a century, Taylor Machine Works, Inc.—known around the world for our iconic “Big Red” lift trucks—has been a trusted leader in the material handling industry. Engineered and built in the USA, Taylor equipment is designed to perform in the most demanding environments, from steel mills and lumber yards to ports and intermodal terminals. Our commitment to durability, reliability, and performance has earned Taylor a reputation for excellence across generations of customers.

What truly sets Taylor apart is our factory direct model. With 35 factory direct stores across the 13 states, we provide unmatched parts availability, 24/7 service, and Taylor Master Certified technical support directly from the source. Our highly trained technicians ensure faster response times and personalized support, helping you maximize uptime and keep operations running smoothly.

Taylor’s reach extends far beyond U.S. borders, with a global footprint in over 80 countries. Taylor equipment plays a vital role in industries such as mining, oil and gas, agriculture, logistics, and more. Supported by a robust dealer network, Taylor delivers the same level of quality, service, and dependability worldwide.

When performance matters and downtime is not an option, Taylor lift trucks deliver. Backed by over 95 years of innovation and a team dedicated to your success, “Big Red” stands ready to meet the toughest challenges in material handling—anywhere in the world.

WE ARE TAYLOR

Design, Engineer, Build, & Service
...It’s What We Do!

TABLE OF CONTENTS

FORKLIFTS PNEUMATIC TIRE 5 CONTAINER HANDLERS 31

4K - 6K Capacity: 24" LC	6	Empty Containers: 4 - 8 High Stacking	32
7K - 12K Capacity: 24" LC	7	Empty Containers: 5 - 8 High Stacking	33
13.5K - 17.5K Capacity: 24" LC	8	Loaded Handlers: 3 - 6 High Stacking	34
18K - 20K Capacity: 24" & 36" LC	9	Reach Stackers: Up to 6 High Stacking	35
20K - 28K Capacity: 24" LC	10	Reach Stackers: 4 - 5 High Stacking & Barge...36	
30K - 33K Capacity: 24" & 48" LC	11		
35K - 36K Capacity: 24" & 48" LC	12		
36K - 45K Capacity: 36" & 48" LC	13		
52K - 55K Capacity: 36" & 48" LC	14		
62K - 70K Capacity: 36" & 48" LC	15		
70K - 88K Capacity: 48" LC	16		
90K - 100K Capacity: 48" LC	17		
100K - 125K Capacity: 48" & 50" LC	18		
Removable CWT: 40K - 100K Capacity	19		
Riggers: 30K - 60K Capacity	20		
ROROs: 62K - 72K Capacity	20		
Log Stackers: 80K - 100K Capacity	20		

SPECIAL BUILT EQUIPMENT 21

Special Built: Miscellaneous	22
------------------------------------	----

FORKLIFTS CUSHION TIRE 27

Cushion Tire: 4K - 35K Capacity	28
Heavy Cushion Tire: 25K - 85K Capacity	29

FORKLIFTS

PNEUMATIC TIRE



4K - 6K Capacity: 24" LC



GT40, 50
PNEUMATIC LIFT TRUCK

Cap: 4K lbs (1.8K kg)
Cap: 5K lbs (2.3K kg)
W.B.: 64 in (1623 mm)
L.C.: 24 in (610 mm)



GTR40, 50
PNEUMATIC LIFT TRUCK

Cap: 4K lbs (1.8K kg)
Cap: 5K lbs (2.3K kg)
W.B.: 64 in (1623 mm)
L.C.: 24 in (610 mm)



GTE50
BEV - ELECTRIC LIFT TRUCK

Cap: 5K lbs (2.3K kg)
W.B.: 63.4n (1610 mm)
L.C.: 24 in (610 mm)



GT60, 66
PNEUMATIC LIFT TRUCK

Cap: 6K lbs (2.7K kg)
Cap: 6.6K lbs (3K kg)
W.B.: 67 in (1702 mm)
L.C.: 24 in (610 mm)



GTE60S
BEV - ELECTRIC LIFT TRUCK

Cap: 6K lbs (2.7K kg)
W.B.: 63.4n (1610 mm)
L.C.: 24 in (610 mm)



GTE60
BEV - ELECTRIC LIFT TRUCK

Cap: 6K lbs (2.7K kg)
W.B.: 68.9n (1750 mm)
L.C.: 24 in (610 mm)

7K - 12K Capacity: 24" LC



GTR70
PNEUMATIC LIFT TRUCK

Cap: 7K lbs (3.2K kg)
W.B.: 67n (1702 mm)
L.C.: 24 in (610 mm)



GTE70
BEV - ELECTRIC LIFT TRUCK

Cap: 7K lbs (3.2K kg)
W.B.: 68.9n (1750 mm)
L.C.: 24 in (610 mm)



GTR80, 90
PNEUMATIC LIFT TRUCK

Cap: 8K lbs (3.6K kg)
Cap: 9K lbs (4.1K kg)
W.B.: 76.8 in (1950 mm)
L.C.: 24 in (610 mm)



GTE80
BEV - ELECTRIC LIFT TRUCK

Cap: 8K lbs (3.6K kg)
W.B.: 78.7n (2000 mm)
L.C.: 24 in (610 mm)



GTE90, GTE100
BEV - ELECTRIC LIFT TRUCK

Cap: 9K lbs (4.1K kg)
Cap: 10K lbs (4.5K kg)
W.B.: 78.7n (2000 mm)
L.C.: 24 in (610 mm)



GTR100, 110, 120
PNEUMATIC LIFT TRUCK

Cap: 10K lbs (4.5K kg)
Cap: 11K lbs (5K kg)
Cap: 12K lbs (5.5K kg)
W.B.: 82.7 in (2100 mm)
L.C.: 24 in (610 mm)

13.5K - 17.5K Capacity: 24" LC



GT135
PNEUMATIC LIFT TRUCK

Cap: 13.5K lbs (6K kg)
W.B.: 88.6 in (2250 mm)
L.C.: 24 in (610 mm)



GT155
PNEUMATIC LIFT TRUCK

Cap: 15.5K lbs (7K kg)
W.B.: 88.6 in (2250 mm)
L.C.: 24 in (610 mm)



GTZ155
BEV - ELECTRIC LIFT TRUCK

Cap: 15.5K lbs (7K kg)
W.B.: 87 in (2210 mm)
L.C.: 24 in (610 mm)



X160
PNEUMATIC LIFT TRUCK

Cap: 16K lbs (7K kg)
W.B.: 104 in (2641 mm)
L.C.: 24 in (610 mm)



GT165
PNEUMATIC LIFT TRUCK

Cap: 16.5K lbs (7.5K kg)
W.B.: 88.6 in (2250 mm)
L.C.: 24 in (610 mm)



X175
PNEUMATIC LIFT TRUCK

Cap: 17.5K lbs (7.9K kg)
W.B.: 104 in (2641 mm)
L.C.: 24 in (610 mm)

18K - 20K Capacity: 24" & 36" LC



GT180
PNEUMATIC LIFT TRUCK

Cap: 18K lbs (8K kg)
W.B.: 98.4 in (2499 mm)
L.C.: 24 in (610 mm)



GTZ180
BEV - ELECTRIC LIFT TRUCK

Cap: 18K lbs (8K kg)
W.B.: 98 in (2489 mm)
L.C.: 24 in (610 mm)



X180S
PNEUMATIC LIFT TRUCK

Cap: 18K lbs (8K kg)
W.B.: 101 in (2565 mm)
L.C.: 24 in (610 mm)



XH180S
PNEUMATIC LIFT TRUCK
Hydrostatic Version Available

Cap: 18K lbs (8K kg)
W.B.: 104 in (2641 mm)
L.C.: 36 in (914 mm)



XB180S
BIG WHEEL LIFT TRUCK

Cap: 18K lbs (8K kg)
W.B.: 110 in (2794 mm)
L.C.: 24 in (610 mm)



XB200S
BIG WHEEL LIFT TRUCK

Cap: 20K lbs (9K kg)
W.B.: 110 in (2794 mm)
L.C.: 24 in (610 mm)

20K - 28K Capacity: 24" LC



X200S
PNEUMATIC LIFT TRUCK

Cap: 20K lbs (9K kg)
W.B.: 101 in (2565 mm)
L.C.: 24 in (610 mm)



X220S
PNEUMATIC LIFT TRUCK

Cap: 22K lbs (10K kg)
W.B.: 101 in (2565 mm)
L.C.: 24 in (610 mm)



X250S
PNEUMATIC LIFT TRUCK

Cap: 25K lbs (11K kg)
W.B.: 110 in (2794 mm)
L.C.: 24 in (610 mm)



X250M
PNEUMATIC LIFT TRUCK

Cap: 25K lbs (11K kg)
W.B.: 121 in (3073 mm)
L.C.: 24 in (610 mm)



XB250M
BIG WHEEL LIFT TRUCK

Cap: 25K lbs (11K kg)
W.B.: 140 in (3556 mm)
L.C.: 24 in (610 mm)



X280M
PNEUMATIC LIFT TRUCK

Cap: 28K lbs (13K kg)
W.B.: 121 in (3073 mm)
L.C.: 24 in (610 mm)

30K - 33K Capacity: 24" & 48" LC



X300S
PNEUMATIC LIFT TRUCK

Cap: 30K lbs (14K kg)
W.B.: 110 in (2794 mm)
L.C.: 24 in (610 mm)



X300M
PNEUMATIC LIFT TRUCK

Cap: 30K lbs (14K kg)
W.B.: 121 in (3073 mm)
L.C.: 24 in (610 mm)



XB300L
BIG WHEEL LIFT TRUCK

Cap: 30K lbs (14K kg)
W.B.: 140 in (3556 mm)
L.C.: 24 in (610 mm)



XH300L
PNEUMATIC LIFT TRUCK
Off-Set Cab Available

Cap: 30K lbs (13.6K kg)
W.B.: 148 in (3759 mm)
L.C.: 48 in (1219 mm)



X330S
PNEUMATIC LIFT TRUCK
Lowered [SL] Cab Available

Cap: 33K lbs (15K kg)
W.B.: 110 in (2794 mm)
L.C.: 24 in (610 mm)



X330M
PNEUMATIC LIFT TRUCK

Cap: 33K lbs (15K kg)
W.B.: 121 in (3073 mm)
L.C.: 24 in (610 mm)

35K - 36K Capacity: 24" & 48" LC



GTR16-6
PNEUMATIC LIFT TRUCK

Cap: 36K lbs (16.3K kg)
W.B.: 122 in (3099 mm)
L.C.: 24 in (610 mm)



GTR16-12
PNEUMATIC LIFT TRUCK

Cap: 36K lbs (16.3K kg)
W.B.: 148 in (3759 mm)
L.C.: 48 in (1219 mm)



XH350L
PNEUMATIC LIFT TRUCK
Off-Set Cab Available

Cap: 35K lbs (15.9 kg)
W.B.: 148 in (3759 mm)
L.C.: 48 in (1219 mm)



X360M
PNEUMATIC LIFT TRUCK

Cap: 36K lbs (16K kg)
W.B.: 121 in (3073 mm)
L.C.: 24 in (610 mm)



XB360L
BIG WHEEL LIFT TRUCK

Cap: 36K lbs (16K kg)
W.B.: 140 in (3556 mm)
L.C.: 24 in (610 mm)



X360L
PNEUMATIC LIFT TRUCK

Cap: 36K lbs (16K kg)
W.B.: 138 in (3505 mm)
L.C.: 24 in (610 mm)

36K - 45K Capacity: 36" & 48" LC



XH360L
FULL CAPACITY w/SS
Off-Set Cab Available

Cap: 36K lbs (16.3 kg)
W.B.: 148 in (3759 mm)
L.C.: 48 in (1219 mm)



ZH360L - BABA
BEV - PNEUMATIC TIRE

Cap: 36K lbs (16.3 kg)
W.B.: 148 in (3759 mm)
L.C.: 48 in (1219 mm)



XH370L
PNEUMATIC LIFT TRUCK

Cap: 37K lbs (16.8K kg)
W.B.: 148 in (3759 mm)
L.C.: 48 in (1219 mm)



XH400L
PNEUMATIC LIFT TRUCK

Cap: 40K lbs (18K kg)
W.B.: 158 in (4013 mm)
L.C.: 48 in (1219 mm)



X450S
PNEUMATIC LIFT TRUCK

Cap: 45K lbs (20K kg)
W.B.: 144 in (3657 mm)
L.C.: 36 in (914 mm)



XH450M
PNEUMATIC LIFT TRUCK

Cap: 45K lbs (20K kg)
W.B.: 156 in (3962 mm)
L.C.: 48 in (1219 mm)

52K - 55K Capacity: 36" & 48" LC



X520S
PNEUMATIC LIFT TRUCK

Cap: 52K lbs (24K kg)
W.B.: 144 in (3657 mm)
L.C.: 36 in (914 mm)



X550S
PNEUMATIC LIFT TRUCK
Off-Set Cab Available

Cap: 55K lbs (25K kg)
W.B.: 144 in (3657 mm)
L.C.: 36 in (914 mm)



GTR25-12
PNEUMATIC LIFT TRUCK

Cap: 55K lbs (25K kg)
W.B.: 167 in (4242 mm)
L.C.: 48 in (1219 mm)



GTX550H
PNEUMATIC LIFT TRUCK

Cap: 55K lbs (25K kg)
W.B.: 167 in (4242 mm)
L.C.: 48 in (1219 mm)



XH550M
PNEUMATIC LIFT TRUCK

Cap: 55K lbs (25K kg)
W.B.: 170 in (4318 mm)
L.C.: 48 in (1219 mm)



ZH550M - BABA
BEV - PNEUMATIC TIRE

Cap: 55K lbs (25K kg)
W.B.: 170 in (4318 mm)
L.C.: 48 in (1219 mm)

62K - 70K Capacity: 36" & 48" LC



GTX620H
PNEUMATIC LIFT TRUCK

Cap: 61.7K lbs (28K kg)
W.B.: 177 in (4496 mm)
L.C.: 48 in (1219 mm)



X650S
PNEUMATIC LIFT TRUCK
Off-Set Cab Available

Cap: 65K lbs (29.5K kg)
W.B.: 164 in (4165 mm)
L.C.: 36 in (914 mm)



XH650L
PNEUMATIC LIFT TRUCK

Cap: 65K lbs (29.5K kg)
W.B.: 180 in (4572 mm)
L.C.: 48 in (1219 mm)



ZH650L - BABA
BEV - PNEUMATIC TIRE

Cap: 65K lbs (30K kg)
W.B.: 180 in (4572 mm)
L.C.: 48 in (1219 mm)



GTR30-12
PNEUMATIC LIFT TRUCK
Also Available in 32t Capacity

Cap: 65K lbs (30K kg)
W.B.: 187 in (mm)
L.C.: 48 in (1219 mm)



XH700L
PNEUMATIC LIFT TRUCK

Cap: 70K lbs (32K kg)
W.B.: 190 in (4826 mm)
L.C.: 48 in (1219 mm)

70K - 88K Capacity: 48" LC



GTX700H
PNEUMATIC LIFT TRUCK

Cap: 70.6K lbs (32K kg)
W.B.: 187 in (4750 mm)
L.C.: 48 in (1219 mm)



GTX725H
PNEUMATIC LIFT TRUCK

Cap: 72.3K lbs (33K kg)
W.B.: 187 in (4750 mm)
L.C.: 48 in (1219 mm)



X800S, 900S
HIGH CAPACITY LIFT TRUCK

Cap: 80K lbs (36K kg)
Cap: 90K lbs (41K kg)
W.B.: 195 in (4953 mm)
L.C.: 48 in (1219 mm)



X800L, 925L
HIGH CAPACITY LIFT TRUCK

Cap: 80K lbs (36K kg)
Cap: 92.5K lbs (42.5 kg)
W.B.: 195 in (4953 mm)
L.C.: 48 in (1219 mm)



GTX835H
HIGH CAPACITY LIFT TRUCK

Cap: 83.8K lbs (38K kg)
W.B.: 196 in (5000 mm)
L.C.: 48 in (1219 mm)



GTX880H
HIGH CAPACITY LIFT TRUCK

Cap: 88.2K lbs (40K kg)
W.B.: 197 in (5004 mm)
L.C.: 48 in (1219 mm)

90K - 100K Capacity: 48" LC



X900M

HIGH CAPACITY LIFT TRUCK

Cap: 90K lbs (41K kg)
W.B.: 215 in (5461 mm)
L.C.: 48 in (1219 mm)



GTX925H

HIGH CAPACITY LIFT TRUCK

Cap: 92.6K lbs (42K kg)
W.B.: 212 in (5385 mm)
L.C.: 48 in (1219 mm)



XH925L

HIGH CAPACITY LIFT TRUCK

Cap: 92.5K lbs (42K kg)
W.B.: 225 in (5715 mm)
L.C.: 48 in (1219 mm)



ZH925L - BABA BEV - PNEUMATIC TIRE

Cap: 92.5K lbs (42K kg)
W.B.: 225 in (5715 mm)
L.C.: 48 in (1219 mm)



GTX990H

HIGH CAPACITY LIFT TRUCK

Cap: 99.2K lbs (45K kg)
W.B.: 232 in (5893 mm)
L.C.: 48 in (1219 mm)



XH1000

HIGH CAPACITY LIFT TRUCK

Cap: 100K lbs (45K kg)
W.B.: 225 in (5715 mm)
L.C.: 48 in (1219 mm)

100K - 125K Capacity: 48" & 50" LC



ZH1000 - BABA
BEV - PNEUMATIC TIRE

Cap: 100K lbs (45K kg)
W.B.: 225 in (5715 mm)
L.C.: 48 in (1219 mm)



GTX1050H
HIGH CAPACITY LIFT TRUCK

Cap: 105.8K lbs (48K kg)
W.B.: 232 in (5893 mm)
L.C.: 48 in (1219 mm)



X1100, 1200
HIGH CAPACITY LIFT TRUCK

Cap: 110K lbs (50K kg)
Cap: 120K lbs (54K kg)
W.B.: 257 in (6527 mm)
L.C.: 48 in (1219 mm)



X1200L
HIGH CAPACITY LIFT TRUCK

Cap: 120K lbs (54K kg)
W.B.: 310 in (7874 mm)
L.C.: 50 in (1270 mm)



X1250
HIGH CAPACITY LIFT TRUCK

Cap: 125K lbs (57K kg)
W.B.: 288 in (7315 mm)
L.C.: 48 in (1219 mm)

Removable CWT: 40K - 100K Capacity



XH400RC
REMOVABLE CTWT

Cap: 40K lbs (16.3K kg)
W.B.: 158 in (4013 mm)
L.C.: 48 in (1219 mm)



X550RC
REMOVABLE CTWT

Cap: 55K lbs (25K kg)
W.B.: 156 in (3962 mm)
L.C.: 36 in (914 mm)



X925RC
REMOVABLE CTWT

Cap: 92.5K lbs (42K kg)
W.B.: 225 in (5715 mm)
L.C.: 48 in (1219 mm)



X1000RC
REMOVABLE CTWT

Cap: 100K lbs (45.4K kg)
W.B.: 195 in (4953 mm)
L.C.: 48 in (1219 mm)

Riggers: 30K - 60K Capacity



X4030

RIGGER TRUCK

Cap: 30K lbs (13.6K kg)
W.B.: 132 in (3352 mm)
L.C.: 36 in (914 mm)



XE4060

EXTENDABLE WHEEL BASE

Cap: 40K lbs (18KK kg)
Cap: 60K lbs (27.2K kg)
W.B.: 98 in (2489mm)
W.B.: 146 in (3708 mm)

ROROs: 62K - 72K Capacity



X620RR

ROLL-ON ROLL-OFF (RORO)

Cap: 62K lbs (28K kg)
W.B.: 167 in (4241 mm)
L.C.: 48 in (1219 mm)



X720RR

ROLL-ON ROLL-OFF (RORO)

Cap: 72K lbs (33K kg)
W.B.: 167 in (4241 mm)
L.C.: 48 in (1219 mm)

Log Stackers: 80K - 100K Capacity



XLS800, 900

FIXED CENTER CAB

Cap: 80K lbs (36.3K kg)
Cap: 90K lbs (41K kg)
W.B.: 245 in (6223 mm)
L.C.: 48 in (1219 mm)



XLS1000

ROTATING OPERATOR CAB

Cap: 100K lbs (45.4K kg)
W.B.: 288 in (7315 mm)
L.C.: 48 in (1219 mm)

SPECIAL BUILT EQUIPMENT



Special Built: Miscellaneous



XTX200
TOW TRUCK

Cap: 20K lbs (9.1K kg)
W.B.: 91 in (2311 mm)
L.C.: NA



X220S
PAPER ROLL HANDLER

Cap: 22K lbs (10K kg)
W.B.: 101 in (2565 mm)
L.C.: 24 in (610 mm)



X250M
MULTI-FORK

Cap: 25K lbs (11K kg)
W.B.: 121 in (3073 mm)
L.C.: 24 in (610 mm)



X280S
CLAMP

Cap: 28K lbs (13K kg)
W.B.: 110 in (2794 mm)
L.C.: 24 in (610 mm)



XH350L
PRODUCE HANDLER

Cap: 35K lbs (15.9 kg)
W.B.: 148 in (3759 mm)
L.C.: 48 in (1219 mm)



X90CS
CHASSIS FLIPPER

Cap: 36K lbs (16K kg)
W.B.: 138 in (3505 mm)
L.C.: 24 in (610 mm)

Special Built: Continued



XH360L
TIRE HANDLER

Cap: 36K lbs (16.3 kg)
W.B.: 148 in (3759 mm)
L.C.: 48 in (1219 mm)



XH360L
OIL FIELD HOPPER SYSTEM

Cap: 36K lbs (16.3 kg)
W.B.: 148 in (3759 mm)
L.C.: 48 in (1219 mm)



XA50
ANODE HANDLER

Cap: 36K lbs (16K kg)
W.B.: 138 in (3505 mm)
L.C.: 24 in (610 mm)



X500MR
RAISED CAB

Cap: 50K lbs (23K kg)
W.B.: 156 in (3962 mm)
L.C.: 50 in (1270 mm)



XN520S
NARROW ISLE LIFT

Cap: 52K lbs (24K kg)
W.B.: 154 in (3911 mm)
L.C.: 36 in (914 mm)



XTP550, 900
PLATFORM TRUCK

Cap: 55K lbs (25K kg)
Cap: 90K lbs (41K kg)
W.B.: 117 in (2972 mm)
L.C.: NA

Special Built: Continued



XH1000
MAGNET ATTACHMENT

Cap: 100K lbs (45K kg)
W.B.: 225 in (5715 mm)
L.C.: 48 in (1219 mm)



X1100
SLAB GRAB

Cap: 110K lbs (50K kg)
W.B.: 257 in (6527 mm)
L.C.: 48 in (1219 mm)



REACH STACKER
VERSITILITY OPTIONS

- Slab Clamps, • Magnets,
- Pipe Clamps, • Vacuum,
- Rotating or Coil Rams,
- Coil Clamps, • Flipper Beams
- Winched/Fixed Hooks



XRS-9972
WIND TOWER BLADES

Cap: 90K lbs (40.8 K kg)
W.B.: 258 in (6553 mm)
L.C.: 81 in (2057 mm)



XRS-1075
MAGNET PACKAGE

Cap: 90K lbs (40.8 K kg)
W.B.: 256 in (6502 mm)
L.C.: 70 in (1778 mm)



XRS-9972
MAGNET PACKAGE - BABA

Cap: 90K lbs (40.8 K kg)
W.B.: 258 in (6553 mm)
L.C.: 81 in (2057 mm)

Special Built: Continued



GTX-9968
COIL HOOK ATTACHMENT

Cap: 99K lbs (45K kg)
1st Row 4-High
W.B.: 256 in (6502 mm)
L.C.: 70 in (1778 mm)



GTR80/120
LOW HEIGHT CAB

- Container Capable
- Cab w/AC Available



GT SERIES
LIFTING EYE MOUNTS

- Level Pick
- Available for 4,000 lbs - 18,000 lbs Models



XRS-9972
ZRS-9972
1, 3, 5 HOOK - BABA

1 Cap: 120K lbs (54.4K kg)
3 Cap: 106.7K lbs (48.4K kg)
5 Cap: 106.7K lbs (48.4K kg)
W.B.: 258 in (6553 mm)
L.C.: 81 in (2057 mm)



GTR120
PRECAST PIPE FORM

Cap: 12K lbs (5.5K kg)
W.B.: 82.7 in (2100 mm)
L.C.: 24 in (610 mm)



GT155/180
SAWMILL PROTECTION PKG

- Fire Suppression
- Cab Guards
- A/C Guards
- Fender Extension with Mud Flaps



CUSHION TIRE SERIES:

FORKLIFTS **CUSHION TIRE**



Cushion Tire: 4K - 35K Capacity



GTC40, 50 CUSHION TIRE FORKLIFT

Cap: 4K lbs (1.8K kg)
Cap: 5K lbs (2.3K kg)
W.B.: 56.3 in (1430 mm)
L.C.: 24 in (610 mm)



GTC60, 65 CUSHION TIRE FORKLIFT

Cap: 6K lbs (2.7K kg)
Cap: 6.5K lbs (3K kg)
W.B.: 56.3 in (1430 mm)
L.C.: 24 in (610 mm)



XC180 - 220S CUSHION TIRE FORKLIFT

Cap: 18K lbs (8.2K kg)
Cap: 20K lbs (9.1K kg)
Cap: 22K lbs (10K kg)
W.B.: 80 in (2032 mm)
L.C.: 24 in (610 mm)



XC180 - 220SL SHORT & LOW CUSHION TIRE

Cap: 18K lbs (8.2K kg)
Cap: 20K lbs (9.1K kg)
Cap: 22K lbs (10K kg)
W.B.: 80 in (2032 mm)
L.C.: 24 in (610 mm)



XC250 - 300M CUSHION TIRE FORKLIFT

Available in "ML" Low Version

Cap: 25K lbs (11.3K kg)
Cap: 30K lbs (13.6K kg)
W.B.: 88 in (2235 mm)
L.C.: 24 in (610 mm)



XC350L CUSHION TIRE FORKLIFT

Cap: 35K lbs (16K kg)
W.B.: 98 in (2489 mm)
L.C.: 24 in (610 mm)

Heavy Cushion Tire: 25K - 85K Capacity



XHC250 - 300S
CUSHION TIRE FORKLIFT

Cap: 25K lbs (11.3K kg)
Cap: 30K lbs (13.6K kg)
W.B.: 98 in (2489 mm)
L.C.: 24 in (610 mm)



XHC400 - 500L
CUSHION TIRE FORKLIFT

Cap: 40K lbs (18K kg)
Cap: 50K lbs (23K kg)
W.B.: 110 in (2794 mm)
L.C.: 30 in (762 mm)



XHC600
CUSHION TIRE FORKLIFT

Cap: 60K lbs (27K kg)
W.B.: 125 in (3175 mm)
L.C.: 36 in (914 mm)



XHCS600
STAND-UP FORKLIFT

Cap: 60K lbs (27K kg)
W.B.: 125 in (3175 mm)
L.C.: 36 in (914 mm)



XHCS800
STAND-UP FORKLIFT

Cap: 80K lbs (36.3K kg)
W.B.: 130 in (3302 mm)
L.C.: 36 in (914 mm)



XHCS850
STAND-UP FORKLIFT

Cap: 85K lbs (36.3K kg)
W.B.: 130 in (3302 mm)
L.C.: 36 in (914 mm)



PORT OPERATIONS:

CONTAINER HANDLERS

EMPTY, LOADED &
REACH STACKERS



Empty Containers: 4 - 8 High Stacking



XEC-150LE
4 HIGH STACKING EMPTY

Cap: 15K lbs (6.8K kg)
W.B.: 121 in (3073 mm)
L.C.: 48 in (1219 mm)



XEC-155/6
5/6 HIGH STACKING EMPTY

Cap: 15K lbs (6.8K kg)
W.B.: 150 in (3810 mm)
L.C.: 100 in (2540 mm)



GTX-175/6ZE
GTX-177/8ZE
BEV - 5-8 HIGH EMPTY

Cap: 17.6K lbs (8K kg)
W.B.: 180 in (4572 mm)
L.C.: 48 in (1219 mm)



GTX-175/6HY
GTX-177/8HY
HYBRID - 5-8 HIGH EMPTY

Cap: 17.6K lbs (8K kg)
W.B.: 180 in (4572 mm)
L.C.: 48 in (1219 mm)



XEC-205/6
XEC-206/7
XEC-207/8

5-8 HIGH EMPTY
Cap: 20K lbs (9.1K kg)
W.B.: 180 in (4572 mm)
L.C.: 103 in (2616 mm)



ZEC-205/6
ZEC-206/7
ZEC-207/8

BEV - 5-8 HIGH EMPTY
Cap: 20K lbs (9.1K kg)
W.B.: 180 in (4572 mm)
L.C.: 103 in (2616 mm)

Empty Containers: 5 - 8 High Stacking



GTX-205/6
GTX-206/7
GTX-207/8

5-8 HIGH STACKING EMPTY

Cap: 19.8K lbs (9K kg)
 W.B.: 187 in (4750 mm)
 L.C.: 48 in (1219 mm)



GTEC 9.7 [6/7]

GTEC 9.8 [7/8]

6-8 HIGH STACKING EMPTY

Cap: 20K lbs (9.1K kg)
 W.B.: 179 in (4547 mm)
 L.C.: 48 in (1219 mm)



GTEZ 9.7 [6/7]

GTEZ 9.8 [7/8]

BEV - 6-8 HIGH STACKING

Cap: 20K lbs (9.1K kg)
 W.B.: 179 in (4547 mm)
 L.C.: 48 in (1219 mm)



GTEC 10.7DS [6/7]

GTEC 10.8DS [7/8]

DOUBLE STACK

Cap: 22K lbs (10K kg)
 W.B.: 187 in (4750 mm)
 L.C.: 48 in (1219 mm)

Loaded Handlers: 3 - 6 High Stacking



GTX-883TB

3 HIGH STACKING w/LEGS

Cap: 90K lbs (41K kg)
W.B.: 295 in (7493 mm)



GTX-884LC GTX-885LC GTX-886LC

4-6 HIGH STACKING LOADED

Cap: 88K lbs (40K kg)
W.B.: 256 in (6502 mm)



XLC-974* XLC-975 XLC-976

4-6 HIGH STACKING LOADED

Cap: 90K lbs (41K kg)
W.B.: 236 in (5994 mm)
L.C.: 97 in (2464 mm)



ZLC-974* ZLC-975 ZLC-976

BEV - 4-6 HIGH STACKING

Cap: 90K lbs (41K kg)
W.B.: 236 in (5994 mm)
L.C.: 97 in (2464 mm)



XLCT-988*

3 HIGH STACKING w/LEGS

Cap: 88K lbs (40K kg)
W.B.: 288 in (7315 mm)
L.C.: 110 in (2794 mm)

Reach Stackers: Up to 6 High Stacking



GTX-2622

5/6 HIGH STACKING EMPTY

Cap: 26K lbs (12K kg)
1st Row 4-High
W.B.: 201 in (5105 mm)
L.C.: 55 in (1397 mm)



XRS-8877

5-HIGH w/JACKS/LEGS

Cap: 88K lbs (40K kg)
1st Row 4-High
W.B.: 315 in (8001 mm)
L.C.: 70 in (1778 mm)



GRS-4531

5 HIGH STACKING LOADED

Cap: 99K lbs (45K kg)
1st Row 4-High
W.B.: 236 in (5994 mm)
L.C.: 77 in (1956 mm)



GRZ-4531 GRZ-4531L

BEV 5 HIGH STACKING

Cap: 99K lbs (45K kg)
1st Row 4-High
W.B.: 236 in (5994 mm)
W.B.: 246 in (6248 mm)
L.C.: 77 in (1956 mm)



GTX-9968

5 HIGH STACKING LOADED

Cap: 99K lbs (45K kg)
1st Row 4-High
W.B.: 256 in (6502 mm)
L.C.: 70 in (1778 mm)



XRS-9972

5 HIGH STACKING BABA

Cap: 99K lbs (45K kg)
1st Row 4-High
W.B.: 258 in (6553 mm)
L.C.: 81 in (2057 mm)

Reach Stackers: 4 - 5 High Stacking & Barge



ZRS-9972
BEV - 5 HIGH - BABA

Cap: 101K lbs (46K kg)
1st Row 4-High
W.B.: 248 in (6300 mm)
L.C.: 81 in (2057 mm)



XRS-1090
5-HIGH w/JACKS & WTP

Cap: 101.4K lbs (46K kg)
1st Row 4-High
W.B.: 295 in (7493 mm)
L.C.: 70 in (1778 mm)



XRS-1072
5-HIGH STACKING LOADED

Cap: 101.4K lbs (46K kg)
1st Row 4-High
W.B.: 256 in (6502 mm)
L.C.: 70 in (1778 mm)



XRS-1075
5-HIGH STACKING - PPS

Cap: 101.4K lbs (46K kg)
1st Row 4-High
W.B.: 256 in (6502 mm)
L.C.: 70 in (1778 mm)



XRS-1080
5-HIGH STACKING - WTP

Cap: 101.4K lbs (46K kg)
1st Row 4-High
W.B.: 256 in (6502 mm)
L.C.: 70 in (1778 mm)



XHRS-1000
4-HIGH BARGE w/NEG. LIFT

Cap: 92.4K lbs (42K kg)
W.B.: 360 in (9144 mm)
L.C.: 160 in (4064 mm)



PURPOSE BUILT INDUSTRIAL FLEET MANAGEMENT SOLUTIONS

www.taylorleasingandrental.com

FAMILY OWNED & PROFESSIONALLY MANAGED

Taylor Leasing and Rental (TLR) is family owned and operated and has over 25 years of experience in the Leasing and Fleet Management industry. We have 100% control over our funding, and our company's direction.

TAILORED FLEET LEASING PHILOSOPHY

Purpose Built Leasing Solutions, Personalized Evaluation, Customized Plan, & National Coverage.

FAIR MARKET VALUE LEASING SOLUTIONS

A Fair Market Value (FMV) lease offers a low monthly payment, is the most flexible lease structure and may allow you to obtain tax advantages. At the end of the lease term, you may purchase the equipment, return the equipment to the finance company, or continue to pay for use of the equipment according to the terms of the original agreement.

FINANCE / OWNERSHIP LEASING

This structure is similar to a loan but offers 100% financing and the ability to include various soft cost into the lease. At the end of the lease term, ownership of the equipment is transferred to the Lessee.

FLEET MANAGEMENT / MAINTENANCE SERVICES

Taylor Leasing and Rental Fleet Management Services delivers custom built fleet management and maintenance programs tailored for fleets of any size and budget providing you with complete control and unmatched flexibility.

FULL FLEET MAINTENANCE

Our full-service programs put Taylor in charge of all your maintenance needs. From regularly scheduled service to emergency repairs, we'll handle everything. Our Full Maintenance program is the ultimate way to protect you from the unpredictable nature of fleet maintenance expenses.

WE LOOK FORWARD TO WORKING WITH YOU.

It is crucial to your company's success that you choose the right fleet management company and the best industrial fleet lease. We can provide the solution that is right for you.

To speak to one of our experts contact us at 662-773-3421.



THE NEXT GENERATION PEDESTRIAN DETECTION AID



VISIONTM
PLUS
POWERED BY MOBILEYE

Up to 360° of Coverage.





Contact your local distributor for more information or visit us at
www.visionplussafety.com



Vision Plus™ Standalone



Vision Plus™ Integrated
 (only available on Taylor X-Series Trucks with MD4)

The Vision Plus™ System combines vehicle speed, vehicle direction and pedestrian location to reduce the number of alerts to the operator, making the warnings more effective.

CHOOSE YOUR COVERAGE AREA

Vision Plus can be installed on virtually any type of off-highway mobile equipment. Different types of equipment operate in various applications and have unique requirements. Your application and equipment use is specific to your needs. Use the chart below to help in making your coverage area decision.

COVERAGE AREAS



	Sample Equipment:	Rear	Extended	Maximum
Articulating Chassis +				
	Loaders	✓	✓	
	Tractors	✓	✓	
	Forklifts	✓	✓	
	Compactors	✓	✓	
Rear Axle Steering				
	Forklifts	✓	✓	✓
	Tele-Handlers	✓	✓	✓
	Intermodal Handlers	✓	✓	✓
Front Axle Steering ++				
	Tow Trucks	✓	✓	✓
	Mobile Cranes	✓	✓	✓
	Concrete Mixers	✓	✓	✓
	Agricultural Tractors	✓	✓	✓
Tracked Vehicles +++				
	Excavators	✓	✓	✓
	Bulldozers	✓	✓	✓
	Skid Steer Loaders	✓	✓	✓

+ All Vision Plus cameras must be mounted such that there is no relative movement between any of the cameras. When cameras are mounted on the rear portion of an articulated chassis, no cameras can be mounted on the front portion.

++ Vehicles with large implements or attachments may preclude coverage due to blockage of camera view.

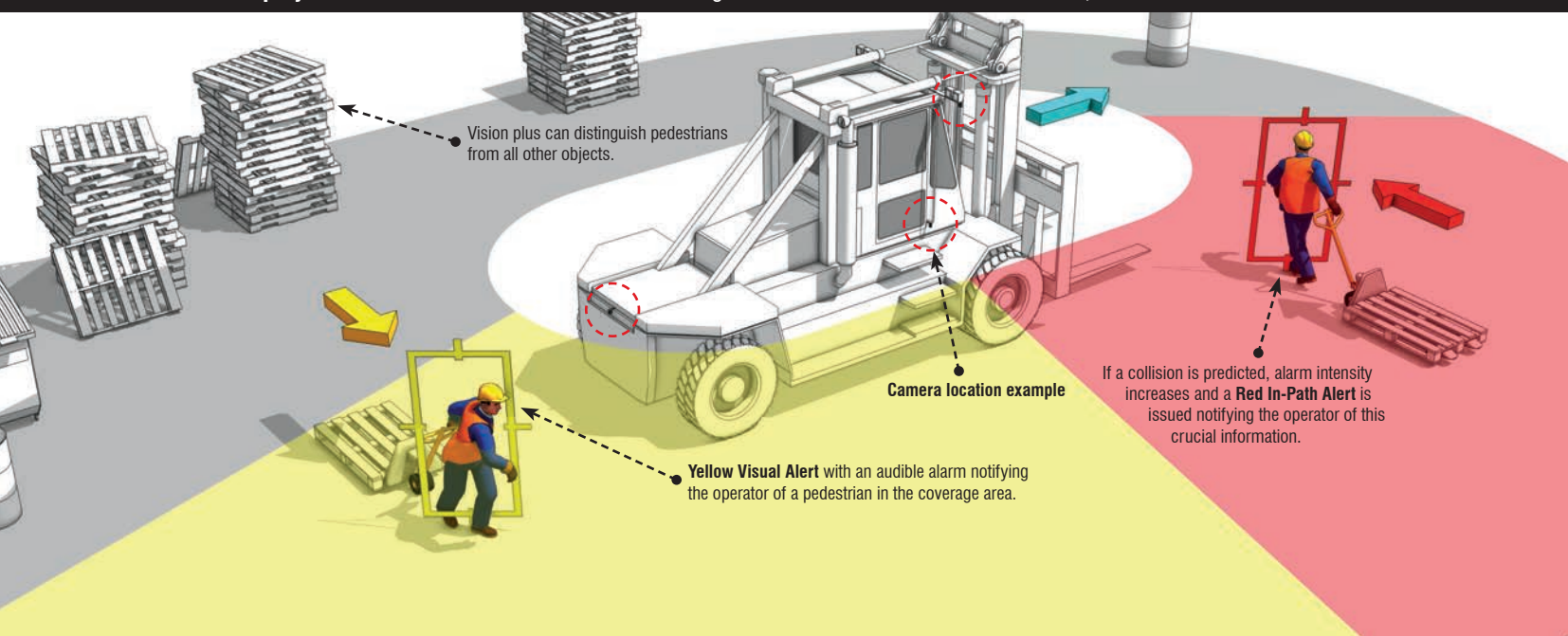
+++ Vehicles with large front end implements or attachments may preclude coverage due to blockage of camera view.

Can't find a system to fit your application?

Vision Plus™ offers a customizable solution to meet your unique requirements. Options for specialty applications include custom coverage area, data logging, on board maintenance tools, and custom engineering. Your Certified Vision Plus™ dealer can discuss with you your specialty application.

(Engineering fees may be required.)

5-Zone Display: Each zone consists of one of the following alerts. **YELLOW:** Pedestrian Present, **RED:** Pedestrian In-Path Alert





DO YOU REALLY KNOW?

Real Time Information To Help Maintain Healthy Fleets And Reduce Cost

SEE YOUR FLEET AT A GLANCE

TaylorTrak Pro® Hardware is integrated into your equipment, interacting with our robust Taylor Integrated Control System (TICS) to ensure your equipment is communicating with you.

TaylorTrak Pro® provides access through WIFI or cellular network coverage based on your regional or work-site requirements. It enables comprehensive and flexible remote monitoring, asset tracking, maintenance scheduling and much more

Visit us at www.taylortrakpro.com



FLUID LEVEL

Diesel Level - 67%

DEF Level - 72%

GPS

Location/Tracking

ANALYTICS & REPORTING

- Optimize Work Flows
- Instant Access to Historical Data & Time Based Reporting
- Compare Overall Fleet Performance
- Detailed Performance Data Delivered to Your Fleet Manager

GPS MAPPING/BOUNDARY MANAGEMENT

- Real-time GPS equipment location on easy-to-use maps
- Ability to Geo-fence an area and receive "Breach" alerts.
- GPS "Breadcrumbs" historical trails of where a piece of equipment has been over customized time-frames.
- Easily identify asset location through color coded GPS map pins.

SCHEDULED MAINTENANCE

- Plan & Track Maintenance. Use recommended Taylor Service Intervals or customize to fit your needs.
- Receive alerts to notify you of approaching "scheduled" maintenance
- Track individual machine and fleet maintenance history
- Easy access to your Local Dealer Service Network

USER FRIENDLY INTERFACE

TaylorTrak Pro® gives you easy, intuitive access to comprehensive information about your equipment's performance and condition. Plus, with customizable alerts sent directly to a smart device, you're always aware when a critical need arises.



REPORT

Container Lift Count

SERVICE

Scheduled Maintenance Required

UTILIZATION

Working - Idle

WARNING

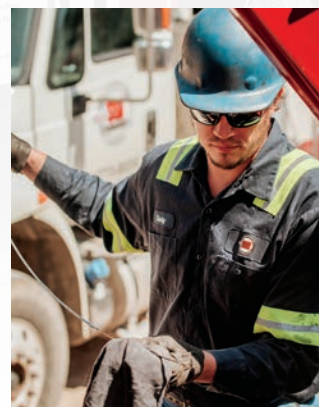
High Engine Temp



Your #1 Source For **TAYLOR® GENUINE OEM PARTS**

24/7 PARTS, SERVICE & SUPPORT

Taylor Sudden Service provides exclusive worldwide distribution of Genuine Taylor OEM Parts and forklift service for equipment designed, manufactured, and marketed by Taylor Machine Works, Inc. Backed by a network of parts and service centers, nationwide dealer support organizations, and factory trained service technicians, we are committed to providing the best parts and service support in the industry.



GENUINE PARTS

No-one can match Taylor Sudden Service's commitment to genuine Taylor OEM forklift and lift truck parts availability. Backed by over 95 years of Taylor customer satisfaction, We continue to provide worldwide forklift parts, service, and support by its extensive inventory, factory stores, and a worldwide network of dealers.

DISTRIBUTION

The Taylor Sudden Service Distribution and Operations Center (DOC) manufactures 99% of Taylor service components. The 97,300 square foot facility serves as the master distribution center, with an dedicated 53,204 square foot warehouse which is able to stock over 35,000 line items.

REBUILDS

Taylor Sudden Service understands the importance of your equipment to your business. We can take your equipment and rebuild it to like new condition, saving you thousands. No matter whether caused by fire, natural disasters, or unforeseen event, We have mutiple facilities specializing in the rebuilding of Taylor equipment.

SUPPORT

Taylor Sudden Service prides itself on being there when you need us. Companies continue to work longer hours to keep up with increasing demands and we are no different. When equipment breaks down, its nice to know that technicians are on call 24/7 to provide the parts, service or support to get you back up and running.

CONVERSION CHARTS:

ENERGY

1 BTU	=	1054.8	Joules
1 Calorie	=	4.1868	Joule
1 Joules	=	0.000948	BTU
1 Kilowatt-Hours	=	3413	BTU
1 Watt-Hours	=	3.413	BTU

AREA

1 Acres	=	4840	Square Yards
1 Centares (centiares)	=	1	Square Meters
1 Hectares	=	2.471054	Acres
1 Hectares	=	107600	Square Feet
1 Square Feet	=	0.000023	Acres
1 Square Kilometers	=	247.1	Acres
1 Square Meters	=	0.000247105	Acres

FLOW

1 Gallons/Minute	=	3.785412	Liters/ Minute
1 Liters/Minute	=	0.000589	Cubic Feet/Second

VOLUME

1 Barrels (oil)	=	42	Gallons (oil)
1 Cubic Inches	=	16.38706	Cubic Centimeters
1 Liters	=	0.264172	Gallons (U.S. liq.)
1 Liters	=	1000	Cubic cm
1 Teaspoons (US)	=	0.00521	Quarts
1 Tablespoons (US)	=	0.0625	Cups
1 Tablespoons (US)	=	14.79	Milliliter

PRESSURE

1 Atmospheres	=	10332	Kgs/sq. meter
1 Bars	=	14.5	Pounds/sq. Inch
1 Bars	=	0.9869	Atmospheres
1 Centimeters of Mercury	=	0.01316	Atmospheres
1 Inches of Mercury	=	0.03342	Atmospheres
<i>P.S.I. x 27.71 = in. H₂O P.S.I. x .0689 = bar</i>			
<i>P.S.I. x 2.036 = in. Hg P.S.I. x 68.95 = mbar</i>			
<i>P.S.I. x 2.036 = in. Hg P.S.I. x 6895 = Pa</i>			
<i>P.S.I. x 51.75 = mm/Hg P.S.I. x 6.895 = kPa</i>			
<i>P.S.I. x .0703 = kg/cm²</i>			

LENGTH

1 Yards	=	3	Foot
1 Yards	=	91.44	Centimeters
1 Foot	=	30.48	Centimeters
1 Foot	=	0.3048	Meters
1 Inches	=	2.54	Centimeters
1 Centimeters	=	0.0328084	Feet
1 Centimeters	=	0.3937008	Inches
1 Centimeters	=	0.01	Meters
1 Centimeters	=	10	Millimeters
1 Kilometers	=	3280.84	Feet
1 Kilometers	=	39400	Inches
1 Meters	=	3.28084	Feet
1 Meters	=	39.37008	Inches
1 Miles (statute)	=	5280	Feet
1 Miles (statute)	=	63400	Inches
1 Miles (statute)	=	1.609	Kilometers
1 Miles (statute)	=	1609	Meters
1 Miles (nautical)	=	6080.27	Feet
1 Miles (nautical)	=	1.853	Kilometers

WEIGHT

1 Pound	=	0.4535924	Kilograms (kg)
1 Ounces	=	0.0625	Pounds
1 Ounces	=	0.03110348	Kilograms (kg)
1 Ounces	=	31.103481	Grams
1 Kilograms	=	32.15074	Ounces
1 Kilograms	=	2.204622	Pounds
1 Kilograms	=	0.001	Tons (metric)
1 Kilograms	=	1000	Grams

POWER

1 BTU/Hour	=	0.0003929	Horse Power Hours
1 Kilowatts	=	1.341	Horse Power
1 Watts	=	0.00134	Horse Power

SPEED

1 Miles/Hour	=	1.609344	Kilometers/Hour
1 Kilometers/Hour	=	0.6214	Miles/Hour
1 Feet per Hour	=	0.3048	Meters per Hour
1 Meters/Seconds	=	3.6	Kilometers/Hour
1 Knots	=	6080	Feet/Hour
1 Knots	=	1.8532	Kilometers/Hour

TEMPERATURE

(°F)	(°C)	DESC.
-459.67 °F	-273.15 °C	Absolute Zero
-50 °F	-45.56 °C	
-40 °F	-40.00 °C	
-30 °F	-34.44 °C	
-20 °F	-28.89 °C	
-10 °F	-23.33 °C	
0 °F	-17.78 °C	
10 °F	-12.22 °C	
20 °F	-6.67 °C	
30 °F	-1.11 °C	
32 °F	0 °C	Freezing Water
40 °F	4.44 °C	
50 °F	10.00 °C	
60 °F	15.56 °C	
70 °F	21.11 °C	Room Temperature
80 °F	26.67 °C	
90 °F	32.22 °C	
98.6 °F	37 °C	Average Body Temp
100 °F	37.78 °C	
110 °F	43.33 °C	
120 °F	48.89 °C	
130 °F	54.44 °C	
140 °F	60.00 °C	
150 °F	65.56 °C	
160 °F	71.11 °C	
170 °F	76.67 °C	
180 °F	82.22 °C	
190 °F	87.78 °C	
200 °F	93.33 °C	
212 °F	100 °C	Boiling Water
300 °F	148.89 °C	
400 °F	204.44 °C	
500 °F	260.00 °C	
600 °F	315.56 °C	
700 °F	371.11 °C	
800 °F	426.67 °C	
900 °F	482.22 °C	
1000 °F	537.78 °C	



TAYLOR® OEM
GENUINE PARTS
 24/7 Parts Service & Support



SCAN for MORE



Taylor Machine Works, Inc.
3690 North Church Avenue, Louisville, MS 39339
Phone: 662-773-3421 - www.taylorforklifts.com

Product Line Brochure 7/21/25