

TAYLOR MACHINE WORKS, INC.



FEATURES BROCHURE

FAITH - VISION - WORK

We engineer and build **what you need!**



Excellence and Experience
for over 88 years and counting...



Featured trucks in this picture are:
XH-350L (Cap. 35,000-lbs at 48" L.C.)

you
can
depend
on
Big Red



Featured trucks in this picture are:
TX-300M (Cap. 30,000-lbs at 24" L.C.)

Proven designs built for
HEAVY DUTY JOBS!



We build Up-time into every machine.

Sacrificing quality and durability is never an option. Your company deserves nothing less than the very best, most dependable, longest lasting and most cost effective machines on the market today. Your business demands **Consistent, Dependable Performance... this is what sets us apart.**

Designed, Engineered & **Built in AMERICA!**



Excellence and Experience
for over 88 years and counting...



Featured truck in this picture is a:
TXO-800S (Cap. 80,000-lbs at 48" L.C.)

ENGINE

Proven Performance



Cummins QSF3.8

110 HP engine (STD)
Electronic turbocharger,
Charge-air after-cooled (air to air) diesel

Rated 110 HP @ 2500 rpm
Peak torque 306 ft-lbs. @ 1600 rpm

For models: X-160 - X-175 & XH-180 models



Cummins QSB6.7

173 HP engine (STD)
Electronic turbocharger
Charge-air after-cooled (air to air) diesel
408 cu-in. (6.7 L) displacement
Rated 173 HP @ 2200 rpm
Peak torque 590 ft-lbs. @ 1500 rpm

For models: X-180 - X-360L, XB, XH & XHO models



Cummins QSB6.7

225 HP engine (STD)
Electronic turbocharger
Charge-air after-cooled (air to air) diesel
408 cu-in. (6.7 L) displacement
Rated 225 HP @ 2200 rpm
Peak torque 700 ft-lbs. @ 1500 rpm

For models: X-450S, X-520S, X-550S, X-550RC models



Cummins QSL9

250 HP engine (STD)
Electronic turbocharger
Charge-air after-cooled (air to air) diesel
543 cu-in. (8.9 L) displacement
Rated 250 HP @ 2200 rpm
Peak torque 675 ft-lbs. @ 1500 rpm

For models: X-400M, X-450M, X-520M, X-550M,
X-650S, X-650L, X-700L models

Other manufacturers are putting smaller displacement engines in their products. While it is true, with today's electronic controlled engines, the engines can offer more horsepower from a smaller displacement.

Higher horse power, from a smaller engine, stresses the mechanical components at higher levels.

You can't expect the same engine life from these smaller displacement engines compared to the larger displacements.

Our studies show, if you take two trucks doing the same work in a particular duty cycle, one with a small displacement and one with a larger displacement, **the larger displacement truck will last longer with less downtime and lower operating costs.**

Excellence and Experience
for over 88 years and counting...



TIER 4 Final Warning:

- TIER 4 Final engines also require the following fluids.
- Ultra Low Sulfur diesel fuel
 - API CJ-4 Low Ash engine oil
 - Antifreeze required Maintain 50/50 Soft Water ** Ethylene Glycol (Low Silicate)(GM 6038-M or ASTM D3306 & D 6210) **Soft water - Cannot contain more than 300-ppm hardness or 100-ppm of either chloride or sulfide.
(These fluids will also work in existing units with TIER II and TIER III engines.)

The DIFFERENCE:

» Larger Displacement Engines
Will Last Longer

To insure that you get the best product for your company, Taylor has taken the approach that **we will not give up performance or durability for questionable potential fuel cost savings.**

The actual fuel costs are heavily influenced by operator style and duty cycle (think gas mileage difference at 45 mph vs 75 mph). A smaller displacement truck may offer minor reductions in fuel used while idling, but the fuel curve of the trucks at high loads are based on the consumption of fuel per horsepower-hour. **In other words, if you do the same work (same average horsepower per hour) there is very little difference in fuel consumed.**

Low end torque is heavily influenced by displacement. Even at the same horsepower, the smaller displacement engines have some performance disadvantages. In tests that we have taken, experienced operators have noticed and commented on the smaller displacement engines not performing as well as the larger ones.

ENGINE

Proven Performance



Volvo TAD1371VE

388 HP engine (STD)
Electronic turbocharger,
Charge-air after-cooled (air to air) diesel

Rated 388 HP @ 1900 rpm
Peak torque 1438 ft-lbs. @ 1200 rpm

For models: X-800 - X-1000, XLC-975, XLC-976
XTCP-900L & Reach Stacker models

Other manufacturers are putting smaller displacement engines in their products. While it is true, with today's electronic controlled engines, the engines can offer more horsepower from a smaller displacement.

Higher horse power, from a smaller engine, stresses the mechanical components at higher levels.

You can't expect the same engine life from these smaller displacement engines compared to the larger displacements.

Our studies show, if you take two trucks doing the same work in a particular duty cycle, one with a small displacement and one with a larger displacement, **the larger displacement truck will last longer with less downtime and lower operating costs.**

Excellence and Experience
for over 88 years and counting...



TIER 4 Final Warning:

TIER 4 Final engines also require the following fluids.

- Ultra Low Sulfur diesel fuel
- API CJ-4 Low Ash engine oil
- Antifreeze required Maintain 50/50 Soft Water ** Ethylene Glycol (Low Silicate)(GM 6038-M or ASTM D3306 & D 6210) **Soft water - Cannot contain more than 300-ppm hardness or 100-ppm of either chloride or sulfide.

(These fluids will also work in existing units with TIER II and TIER III engines.)

The **DIFFERENCE:**

» Larger Displacement Engines
Will Last Longer

To insure that you get the best product for your company, Taylor has taken the approach that **we will not give up performance or durability for questionable potential fuel cost savings.**

The actual fuel costs are heavily influenced by operator style and duty cycle (think gas mileage difference at 45 mph vs 75 mph). A smaller displacement truck may offer minor reductions in fuel used while idling, but the fuel curve of the trucks at high loads are based on the consumption of fuel per horsepower-hour. **In other words, if you do the same work (same average horsepower per hour) there is very little difference in fuel consumed.**

Low end torque is heavily influenced by displacement. Even at the same horsepower, the smaller displacement engines have some performance disadvantages. In tests that we have taken, experienced operators have noticed and commented on the smaller displacement engines not performing as well as the larger ones.

COOLING

Proven **Performance**



Bolted Multi-Section Cooler

Charge-Air Cooler

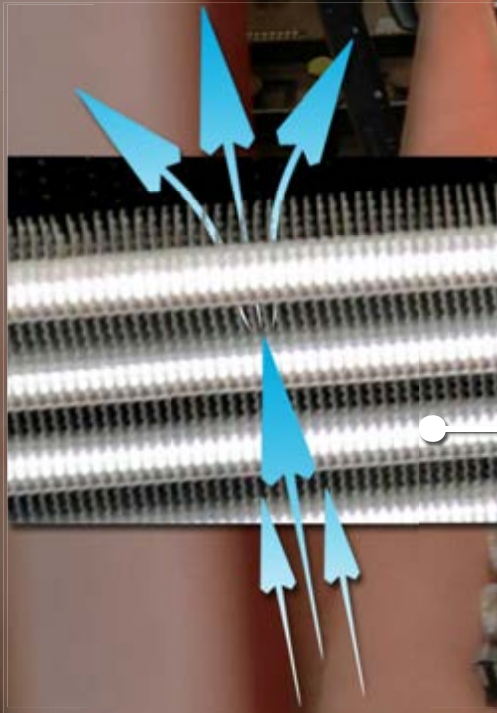
Transmission Cooler

Engine Cooler

Wider Fin Spacing

(6.3 FPI compared to 10 FPI)

The wider fin spacing allows more air to flow through the cooling system. As a result of this, the system runs cooler and is easier to clean. When particulate matter builds up on a cooling system it becomes less efficient. Easily removing this material becomes part of the uptime built into a Taylor.



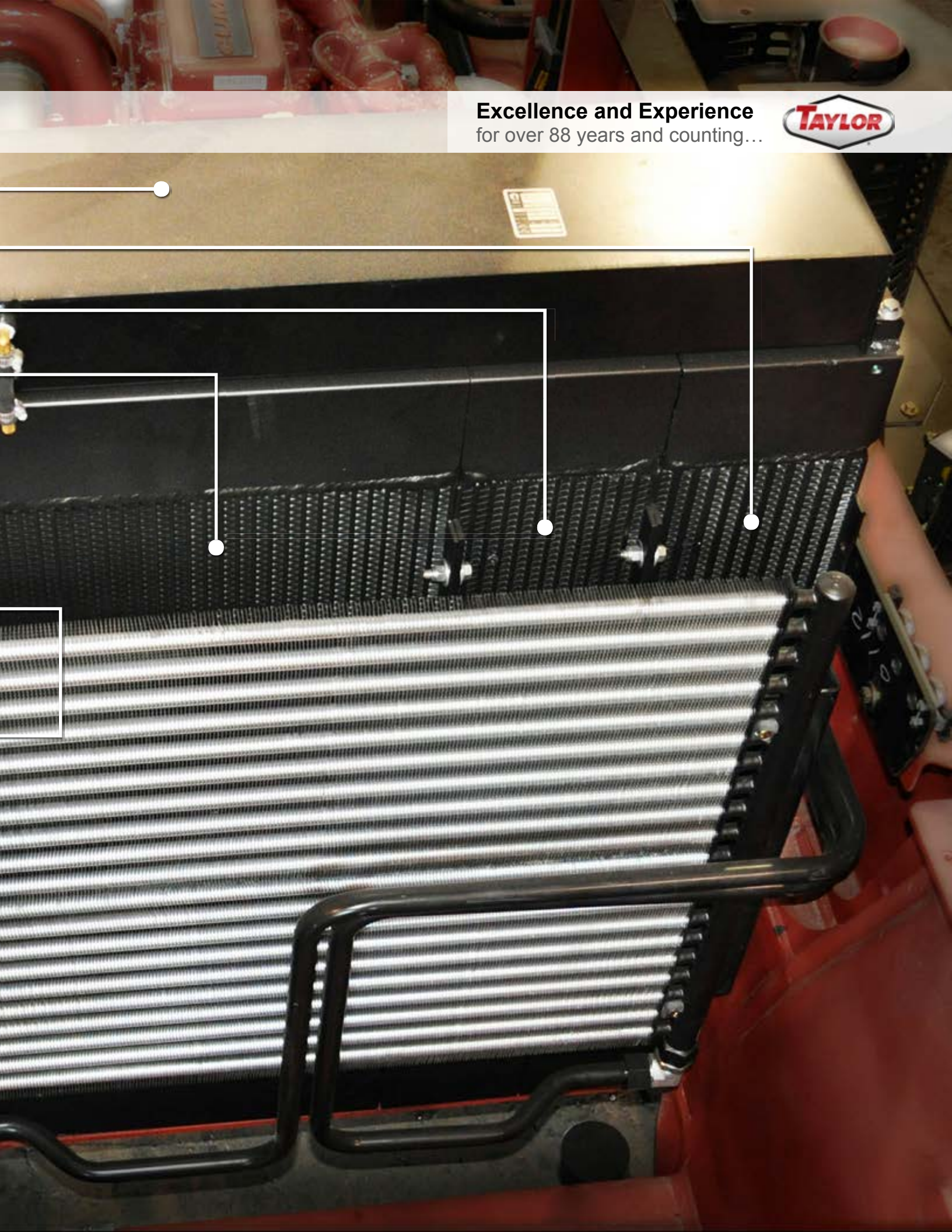
Brakes/Hydraulic Oil Cooler

The **DIFFERENCE:**

- » Better **Air Flow**
- » Easier to **Clean**
- » Reduced **Maintenance**
- » More **Efficient Cooling**

We build **Up-time**
into every machine!

Excellence and Experience
for over 88 years and counting...



Transmission

Proven **Performance**



Steady, reliable shifting is essential to controlling a machine in a heavy-duty work environment. **Control is Productive.**

- Heavy-duty Powershift transmission
- Larger horsepower input rating
- Flex-plate drive
- High capacity 12-plate clutch system for added durability
- Automatic Powershift Control (APC)
- Full directional modulation for soft direction changes
- Transmission mount goes from rail to rail in chassis for a more stable drivetrain

Brake saver system does not allow operator to drive through parking brakes. This feature reduces the excess wear on the brakes.



The **DIFFERENCE:**

- » More Low End Torque
- » Higher Horsepower Input
- » Higher Tractive Effort
- » Superior Reliability

Featured trucks in this picture are:
TS-9972 (Cap.99,000-lb. / 4-High Stacking 9.5-ft. Container
90,400-lb. / 5-High Stacking 9.5-ft. Container)

Excellence and Experience
for over 88 years and counting...



Featured trucks in this picture are:
TXLC-975 (Cap. 90,000-lbs. / 2-High Stacking
80,000-lbs. / 5-High Stacking at 97" L.C.)



FAITH VISION WORK

you
can
depend
on

Big Red®

Taylor Lift Trucks have been refined while thriving in some of the harshest, most demanding “proving grounds” on the planet.

Our reputation was built through over 87 years of working in our **customers unique industrial settings.** This experience is another way **Up-time** is built into every machine.

Featured trucks in this picture are: (left)
TXLC-975 (Cap.90,000-lbs. / 2-High Stacking
80,000-lbs. / 5-High Stacking at 97” L.C.)



Excellence and Experience
for over 88 years and counting...



The DIFFERENCE:

- » Over 87 Years of Experience
- » Privately Held Since 1927
- » We Build What You Need

Featured trucks in this picture are: (right)
TXEC-20718 (Cap.20,000-lbs. / 7-High Stacking 9.5-ft Containers)
(Cap.20,000-lbs. / 8-High Stacking 8.5-ft Containers)

Cab & TICS

Ergonomic Design



The cab is an all steel structure design.

A simple flat-glass windshield design allows for fast economical replacement from most local glass suppliers.

Spacious, uncluttered, shock absorbing, center mounted cab for operator comfort.

Dual panoramic interior rear view mirrors
Dual external side view mirrors
Optional pedestrian camera and monitor

VISION Plus® System Available
(A Pedestrian Detection Aid)

Simple T-shaped dash for added visibility
Comfortable tilting steering wheel
Flip-down dash panel
(All electrical wiring is color coded)
User friendly instrument panel

Dual brake pedals for maximum control
(left – brakes/inching)(right – brakes only)

Premium vinyl, air-ride, adjustable, seating that rotates 15° left and 20° right with adjustable arm rests

Excellence and Experience
for over 88 years and counting...



TICS (Taylor Integrated Control System) gives customers the ability to customize operation parameters of their Taylor lift truck and perform diagnostics which eliminate excessive downtime. TICS also allows the user to track fuel usage, idle times, lift counts, load scales, and much more.

Tinted glass throughout the cab helps to maintain a comfortable working environment.

Fingertip joystick control for smooth, precise handling.

Spacious, all steel cab with sound deadening rubber flooring

Light weight and easily removable floorboards for access to drivetrain, hydraulics etc.

We build **Up-time**
into every machine!

The **DIFFERENCE:**

- » Rugged Steel Cab
- » Easily Replaceable Part
- » No Plastic Cowling
- » Flip-down Dash Panel

Cab & TICS

Data at a Touch



The **DIFFERENCE:**

- » User Friendly Interface
- » Customizable Parameters
- » Fast Diagnostics
- » Diagnosed by Your Mechanic

**Up-time is
built in!**

Excellence and Experience
for over 88 years and counting...



TICS: Taylor Integrated Control System

TICS gives customers the ability to customize operation parameters of their Taylor lift truck and perform diagnostics, which eliminate excessive downtime.

TICS is different from other systems.

The interface is large (7-in. display), easy to understand and user friendly.

TICS diagnostic ability is key to quick repair and less downtime. Troubleshooting and diagnosing a problem can be done by the customer's own service mechanic, without the need for a detached laptop, which gets the machine up and running sooner.



Other functions of TICS:

- Displays fuel usage
- Idle times
- Lift counts
- Load scales
- Service intervals
- Displays engine data
- Displays transmission data
- Monitor hydraulic system
- Limit travel speed
- Control shifting
- Customize machine functions
- Troubleshoot and Diagnose **and much, much more.**

Proven **Design**



Fabricated "Not Forged"
Heavy-duty Steer Axle

Larger Wheel Bearings
Tapered Roller Bearings

Bigger & Heavier
"Dog-Bone" Steer Links

Larger Steer Cylinder
Bolt Through



SIZE
does matter!

Heavy-duty Steer Axles

To insure your machine will continue to handle the demands of your business, we have designed a steer axle like no other.

The hydraulic cylinder design utilizes heavy-duty links from the cylinder ram directly to the spindles. Taylor uses tapered roller bearings exclusively in all our steer axle spindles. These bearings absorb shock loads better and are considered the strongest and most durable bearings in the industry. **You deserve nothing less...**

Excellence and Experience
for over 88 years and counting...



We build **Up-time**
into every machine!

The DIFFERENCE:

- » Fabricated Not Forged
- » Bigger & Heavier Built
- » Robust Components
- » Superior Durability

Featured truck in this picture is a:
TX-925RC (Cap. 92,500-lbs at 48" L.C.)

Proven Design



Heavy-duty Planetary Drive Axles

- Wide stance for more stable and confident material handling
- Hydraulic actuated brakes
- Internal, force-cooled, wet disc brakes
- Bolt through mounting
- Increased tread life



The DIFFERENCE:
» The Most Rugged & Durable
Planetary Axles Available

**Up-time is
built in!**

Excellence and Experience
for over 88 years and counting...



Mast & Carriage

Proven Design



Tilt Cylinders

Overhead tilt cylinders allow less mast rail twisting and greater mast stability than low mount.

Main Rollers

The mast and carriage main rollers are common throughout and use greaseable twin tapered roller bearings.

Side Thrust Pads

Common, cast nylon, side thrust pads are adjustable to compensate for wear.

The DIFFERENCE:


- » Stronger Overhead Tilting
- » Greaseable Tapered Main Rollers
- » Hidden Chains for Enhanced Visibility
- » More Robust Carriage Design

Taylor Designed Heavy-duty Mast & Carriage

All the horsepower in the world will not help if the mast and carriage can't handle the work load. We have designed the utmost durability into all of our mast & carriages.

We will never sacrifice quality nor durability for cost.



A close-up view of the mast and forks of a Taylor forklift. The mast is black with several rollers and rails. The forks are red and extend from the bottom of the mast. The background is a clear blue sky.

Excellence and Experience
for over 88 years and counting...



Chain Rollers

Chain rollers use sealed ball bearings.

Mast Rails

Nested channels, for the lift chains, are standard on many models. Many optional mast choices are available for you to best fit your material handling needs.

LED Work Lights

Mast mounted forward facing LED work lights are standard. You can configure the lights in a manner that best fits your particular application.

Forks

Hammer forged, heat treated, alloy steel forks are pin-mounted, adjustable and full width from pin to tip. *(Optional fork positioning shown)*

Lift with Confidence

Larger heavy-duty carriages require minimal maintenance while being more resistant to dynamic/shock loads with rough terrain, high lift, and/or offset loads.

We build **Up-time**
into every machine!

Featured truck in this picture is a:
X-450M (Cap. 45,000-lbs at 36" L.C.)

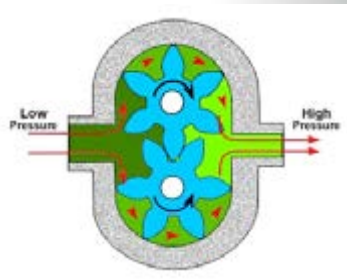
Proven Design



Proven Durable Gear Pumps

A gear pump produces flow by carrying fluid in between the teeth of two meshing gears. One gear is driven by the drive shaft and turns the idler gear. The chambers formed between adjacent gear teeth are enclosed by the pump housing and side plates.

Our research and testing shows that this simple design results in a more durable, efficient and cost effective system.



Power-On-Demand

The Power-On-Demand feature automatically increases the engine speed when the operator activates a hydraulic control which can lead to increased responsiveness from the hydraulic system and an improvement in truck performance. Depending upon duty cycle, keeping engine speed low when hydraulic system demand is low can also lead to less fuel usage.

Taylor will not compromise on durability.

- Gear type pumps
 - more durable against contamination
 - more dependable in different climates
 - lower replacement cost
- Constant full flow, in-tank filtration
- Internal suction screen
- 10-Micron return filtration
- Safety load release valve
- Manual override valves (this feature can be turned on/off to suit operator performance)

The **DIFFERENCE:**

- » Durable Gear Pumps
- » Lower Cost Replacement
- » Robust Components
- » Superior Quality

We build **Up-time**
into every machine!

Excellence and Experience
for over 88 years and counting...



Featured truck in this picture is a:
X-550M (Cap. 55,000-lbs at 48" L.C.)

Direct Service Centers - \$60,000,000 in Parts Inventory Available



Factory Trained Technicians - Over 200 Continually Trained Per Year



Taylor Dealer Sales & Service Centers - Hundreds of Factory Trained Technicians Nationwide



The Best OEM Support in the Industry.

Our customers deserve to know they can always depend on us for service and support 24/7. Because of that expectation, we have factory trained service techs on the ground nationwide. Over 200 service technicians receive continuing education (hands-on) at the factory each year. Your service techs are supported by the best OEM parts and distribution facility in the world. With \$60,000,000 dollars worth of parts distributed across our factory stores and millions more on the shelves at our dealers, **Your Taylor lift truck will be working** instead of sitting for weeks waiting for parts to be shipped from overseas.



Sudden Service, Inc.

Our Core Mission is Defined in Our Name

Full Machine Shop - Dedicated to OEM Parts Production



Distribution and Operations Center - 90,000-sq ft



24/7

Parts - Service - Support

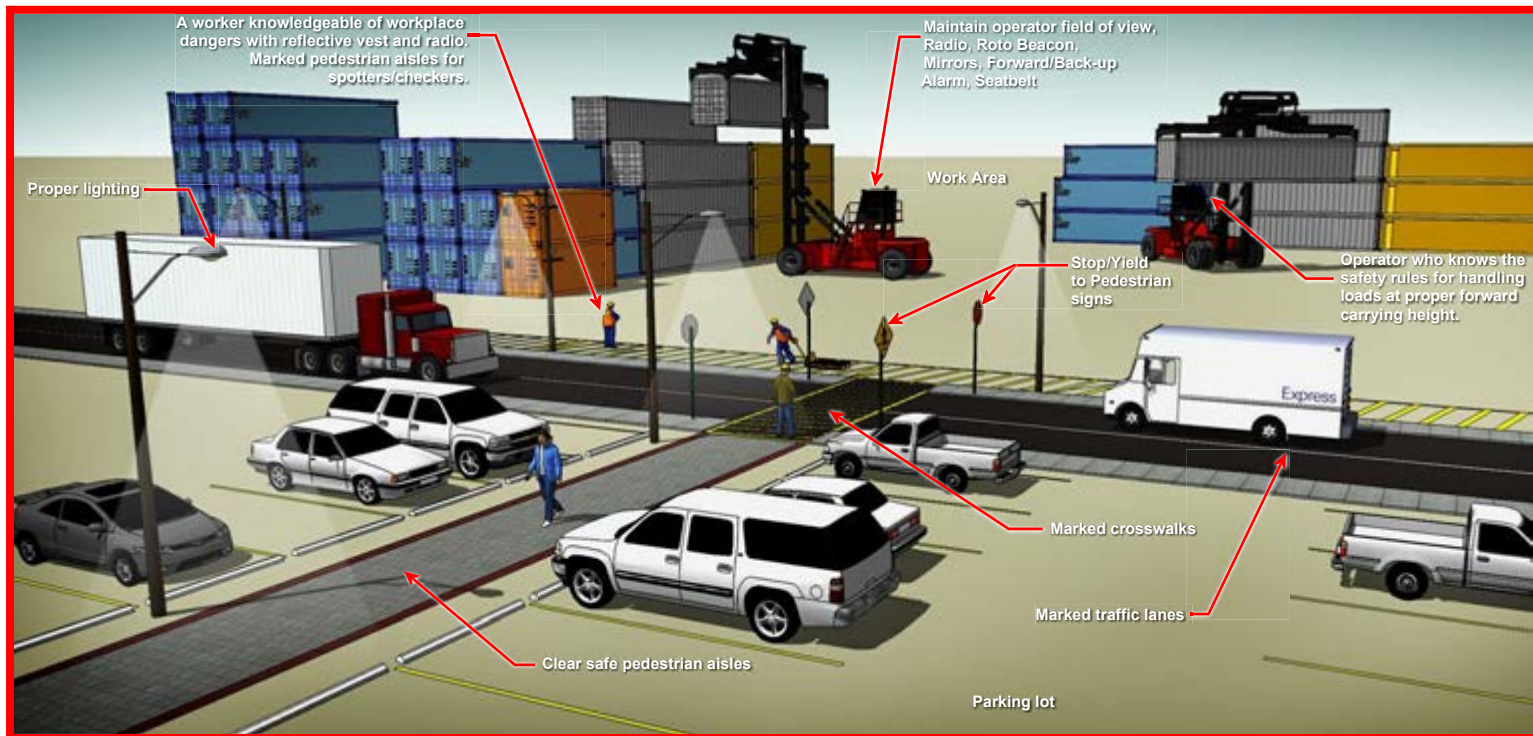
Sudden Service, Inc.

Corporate Headquarters
649 North Church Avenue
Louisville, Mississippi 39339
Phone: (662) 773-8056

www.suddenserviceinc.com



For every industry, there is a Taylor truck that can do the job safely.



Every work site is different and operating conditions change moment by moment. By establishing and enforcing forklift/pedestrian lanes you can increase the safety of your workers and others. Keep pedestrians out of areas where trucks operate and always require operators to look in the direction of and keep a clear view of the path of travel. **OSHA requires you to make sure you are doing it safely.** ANSI B 56.1 provides: The user shall determine if operating conditions require the truck to be equipped with additional sound-proofing or visual devices (such as lights or blinkers) and be responsible for providing and maintaining such devices. **Do the job and do it safely! *Little things make a big difference!***

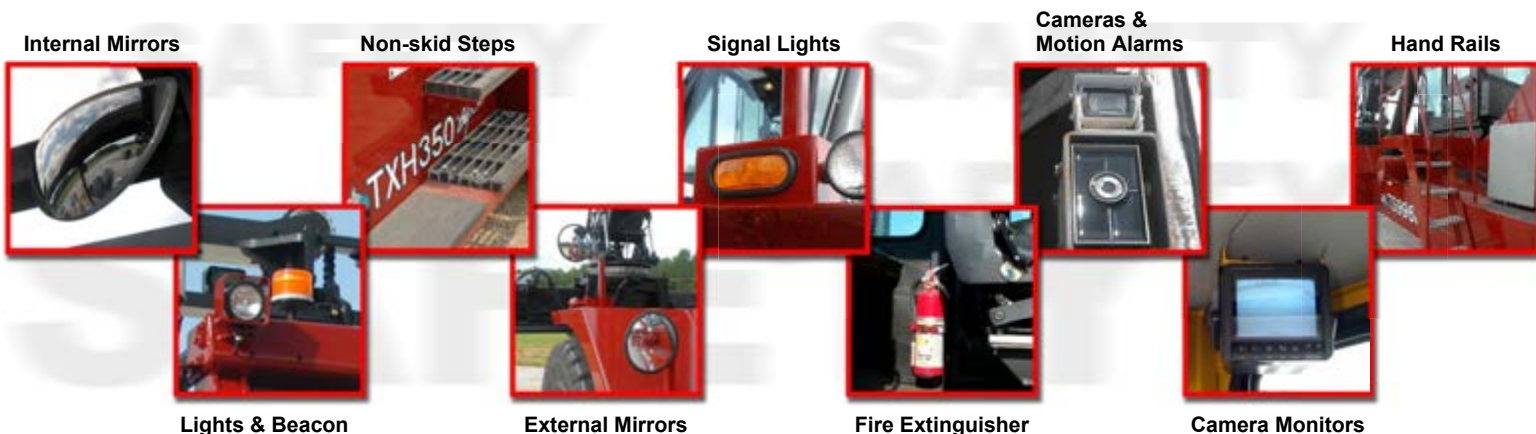
“TAYLORIZE” YOUR TRUCK

Taylor Machine Works has kits (comprising all installation/mounting materials) available for customer order, which can include any or all devices shown in this brochure. Kit contents will depend on individual needs and customer operating conditions. Kit orders must include truck model number and serial number. Order from your authorized Taylor dealer or directly from Taylor Machine Works, Inc., Marketing Support Department.

As discussed in **Safety Check**, pages 31-37, many factors must be considered in determining what, if any, additional devices are necessary for an increase in safety in your operation: ambient noise, habituation, filtering, dependency, fatigue and pedestrian traffic patterns. In fact, some devices may have a net decrease in the safety of your operation. Improper use of mirrors and alarms may encourage an operator not to look in the direction of travel.

Remember, in choosing ancillary devices: **One size does not fit all!**

Given the wide variety of manufacturing and material handling situations which exist, the wide variety of alarms, flashing lights, mirrors, cameras, and other devices which are commercially available, **Taylor strongly suggests that you consult with a safety professional familiar with your type of industrial setting when assessing your specific workplace safety requirements.**



VIP - Vehicle Information Package

Support Materials Provided for Each Machine

(Contents of the VIP may vary depending on the particular model)



- Maintenance Manual
- Operator's Guide
- Safety Check Manual 2nd edition
- Safety Check Video
- Safety Features/Operations Brochure
- Limited Warranty
- New Component Warranties
- Genuine Taylor Parts Brochure
- Leaf Chain Wear Scale
- TaylorMax Oil Filtration Service Instructions

- TaylorMax Filtration Housing
- Service Instructions
- TaylorMax Warranty
- OEM Tire Notification
- Vendor Tire Warranty
- Goodyear OTR Maintenance Manual (CD)
- Mirror Lens Warranty
- OSHA Compliance Statement
- "Its Time For Training" pamphlet

- Operator Examination
- Examination Answer Sheet
- Vendor Publications Order Form
- Service Publications Order Form
- Service Bulletin Volume 13 #7 (audible and visual warning devices)
- Forward Alarm System info
- Tier 4i engine booklet
- Fork Inspection Wear & Testing
- Fork Arm Wear Caliper

A PEDESTRIAN DETECTION AID

VISIONTM PLUS

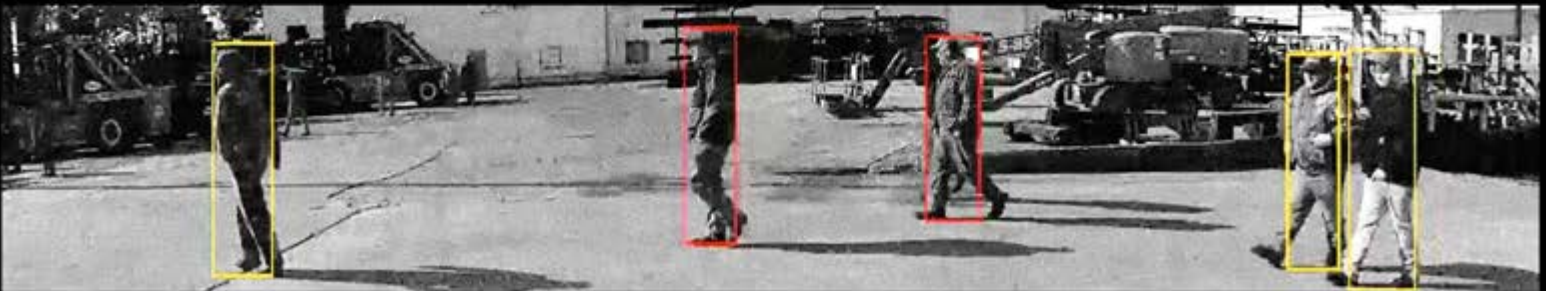
POWERED BY *MOBILEYE*[®]

WWW.VISIONPLUSSAFETY.COM

Vision Plus[®] is a pedestrian detection system designed to aid industrial vehicle operators in monitoring the **presence of pedestrians** in the work area.



Vision Plus[®] tracks multiple pedestrians at the same time and requires **No Device or Tag** to be worn by the pedestrian.



For more information on this unique system, visit our website
www.visionplussafety.com

Have you considered leasing?

Or Custom Fleet Management?

Take a moment to discuss our affordable lease options...



Our goal is to structure a financial product that improves your profit with reduced operating cost by increasing up-time and offering a wide range of financial solutions to fit the specific needs of your business. Taylor Leasing offers over 100 different financial structures within the main product categories of:

- **Operating Lease** - A financial choice which provides use of equipment for extended period of time with a low monthly operating cost.
- **Finance Lease** - This type of lease offers flexibility in payments with equipment ownership options at the end of the lease term.
- **Fleet Management** - Your needs and goals are always evaluated carefully before providing you with a custom fleet leasing solution. We only include fleet management services (including maintenance solutions detailed below) that help your fleet function more efficiently.
- **Fleet Maintenance** - We offer tailored fleet maintenance solutions, that range from periodic service and emergency repairs to full on site personnel. Taylor Fleet Maintenance Programs assist in budgeting, while helping to eliminate unpredictable expenses and allowing you to focus on your actual business.

For more information Phone: (662) 773-3421 Ext. 400 - Fax: (662) 773-9146
or E-mail Stephen Arnett sarnett@taylorbigred.com

www.taylorleasingandrental.com



FAITH VISION WORK



Taylor Machine Works, Inc. - 650 North Church Avenue , Louisville, Mississippi 39339
Phone: (662) 773-3421 - Fax: (662) 773-9146 - www.taylorbigred.com

Preliminary: 6/13/16