

GT SERIES

GLOBAL TRUCK SERIES

SOLID
DEPENDABLE
PERFORMANCE
in a smaller lift truck...



The Taylor GT Series gets the job done!

Capacities ranging from 4,000-lbs to 18,000-lbs all backed by our 24/7 Parts Service & Support



GT-40/50, GT-60, GT-66 & GTR-70 HEAVY-DUTY FORKLIFTS

Available Models:
GT40-50, GT60-66, GTR80-90, GTR100-110-120, GT135-155-165, & GT180



GT-40/50

Rated Capacity: 4,000-lbs (1,814 kg)
Rated Capacity: 5,000-lbs (2,268 kg)
Load Center: 24-in (610 mm)
Wheelbase: 63.8-in. (1,621 mm)



GT-60

Rated Capacity: 6,000-lbs (2,722 kg)
Load Center: 24-in (610 mm)
Wheelbase: 66.9-in. (1,699 mm)



GT-66

Rated Capacity: 6,600-lbs (2,994 kg)
Load Center: 24-in (610 mm)
Wheelbase: 66.9-in. (1,699 mm)



GTR-70

Rated Capacity: 7,000-lbs (3,175 kg)
Load Center: 24-in (610 mm)
Wheelbase: 66.9-in. (1,699 mm)

DRIVE SYSTEM

- HMC Theta 2.4L 65hp tier-4 final LPG engine*
- Isuzu 2.2L 62hp tier-4 final diesel engine (optional)*
- GTR LPG/Gasoline Ford dual fuel tier-4 final (optional)
- GTR "LPS" or "DS" UL classified construction (optional)
- Single speed transmission with standard inching
- Powertrain protection system for engine/transmission
- Single and dual drive front axle setups are available
- 12-volt electrical system with heavy-duty battery

CHASSIS

- All-welded steel frame with integral counterweight
- Heavy-duty, 3/8" thick fenders to limit debris damage
- Easy lift clamshell engine hood for maintenance access
- Recessed tow pin integrated into counterweight
- Low height steps with non-skid surface
- GTR Debris Protection Package (optional)

UPRIGHT & CARRIAGE

- 2-stage & 3-stage uprights (lift heights up to 217")
- GTR quad uprights (lift heights up to 312") (optional)
- GTR Vertical Mast System (optional)
- Upright/mast is trunnion mounted to drive axle
- Nested I-beam uprights feature canted load rollers
- Silent staging upright cylinders prevent racking
- ISO hook-type carriages allow great versatility
- Side shift carriage & hydraulic fork positioners available

OPERATOR COMPARTMENT & ERGONOMICS

- Comfortable isolation mounted operator base
- Overhead guard standard (full cab and a/c available)
- Fully adjustable vinyl mechanical suspension seat
- LCD dash display with audible fuel & temp warnings
- Adjustable steering column pivots above the knee
- GTR fingertip controls with armrest (optional)

*Attention: Taylor GT Models equipped with Tier-3 (Diesel) and Tier-0 (LPG) are available for sale outside of the highly regulated countries of North America, Europe, and Japan.

GT-40/50, GT-60, GT-66 & GTR-70: SPECIAL FEATURES



Ergonomic hydraulic control levers minimize driver fatigue and feature proportional control for precise load placement.



Comfortable full suspension seat adjust for operators up to 370-lbs. It features fore/aft/vertical travel, 20° pivoting backrest, OPS system, and orange seatbelt.



Dash display has integral engine protection system with alarm (monitors coolant temp, oil temp, and engine oil pressure). Speed control is also available.



Multiple front and rear-facing LED work lights configurations are available for all GT Series lift trucks to properly illuminate your specific applications.



Single or Dual (drive tire) planetary front axles feature hydraulically actuated wet disc brakes. Available SOLID tires help prevent downtime due to flats.



Steer axles endure heavy stress. GT steer axles feature fully boxed single cylinder design, with tapered roller bearings, purpose built for harsh applications.



Nested I-beam mast rails provide the operator a wider view through the mast. Standard and multi-stage free-lift masts are available with lift heights up to 217-in.



Multiple ISO hook-type carriages are available. Sideshift and hydraulic fork position carriages help position forks without operator leaving the cabin.



There is a vast array of special attachments for your application. Our industry standard ISO carriages will accept any properly sized 3rd party attachment.



The Square Wave (cotton core style) radiator increases turbulent air which enhances non-clogging properties. Only available on trucks equipped with LPG engine.



The partial cab option has front glass with windshield wiper, solid roof and sky-view window. This provides protection from the elements and retains ease of entry.



Full cabs with heat, defrost and optional A/C are available for max environmental comfort. Bi-fold doors lift off to provide open air cabin when needed.



The HMC Theta LPG (65hp) engine features long life timing chain, engine shutdown protection system and a 2-stage air filtration system with safety element.



Changing LPG tanks can be difficult for some operators. The optional swing-out, drop-down tank bracket allows operators to load a tank with ease.



The Isuzu (62hp) high-torque diesel engine meets Tier-4 final emission standards without the need for DEF fluid (urea). Same protection systems apply as LPG.



GTR-80, GTR-90, GTR-100, GTR-110 & GTR-120 HEAVY-DUTY FORKLIFTS

Available Models:
GT40-50, GT60-66, GTR80-90, GTR100-110-120, GT135-155-165, & GT180



DRIVE SYSTEM

- HDI D34 Tier-4 final diesel engine*
- Kubota 3.8L 85hp tier-4 final LPG engine (optional)*
- 2 speed powershift transmission with standard Inching
- Powertrain protection system for engine/transmission
- Single and dual drive front axle setups are available
- 12-volt electrical system with heavy-duty battery

CHASSIS

- All-welded steel frame with integral counterweight
- Heavy 3/8" thick fenders to limit debris damage
- Easy lift clamshell engine hood for maintenance access
- Recessed tow pin integrated into counterweight
- Low height steps with non-skid surface

UPRIGHT & CARRIAGE

- Upright/mast is pin mounted to drive axle/chassis
- 2-stage & 3-stage uprights (lift heights up to 275")
- Nested i-beam uprights feature canted load rollers
- Silent staging upright cylinders prevent racking
- ISO hook type carriages allow great versatility
- Side shift carriage & hydraulic fork positioners available

OPERATOR COMPARTMENT & ERGONOMICS

- Operator base is isolation mounted for comfort
- Full cab and A/C available in std & low height configurations
- Fully adjustable vinyl mechanical suspension seat
- LCD dash display with audible fuel & temperature warnings
- Adjustable steer column pivots above the knee

*Attention: Taylor GT Models equipped with Tier-3 (Diesel) and Tier-0 (LPG) are available for sale outside of the highly regulated countries of North America, Europe, and Japan.

GTR-80, GTR-90, GTR-100, GTR-110 & GTR-120: SPECIAL FEATURES



Ergonomic hydraulic control levers minimize driver fatigue and feature proportional control for precise load placement. Fingertip controls are also available.



Comfortable full suspension seat adjust for operators up to 370-lbs. It features fore/aft/vertical travel, 20° pivoting backrest, OPS system, and orange seatbelt.



LCD display has integral engine protection system with alarm (monitors coolant temp, oil temp, and engine oil pressure). Speed control is also available.



Single or Dual (drive tire) planetary front axles feature hydraulically actuated wet disc brakes. Available SOLID tires help prevent downtime due to flats.



Steer axles endure heavy stress. GT steer axles feature fully boxed single cylinder design, with tapered roller bearings, purpose built for harsh applications.



Lifting eyes are available across the GT Series. Mounted on the mast and rear chassis, they serve as proper lift points for lifting/lowering units into ships.



Nested I-beam mast rails provide the operator a wider view through the mast. Standard and multi-stage free-lift masts are available with lift heights up to 275-in.



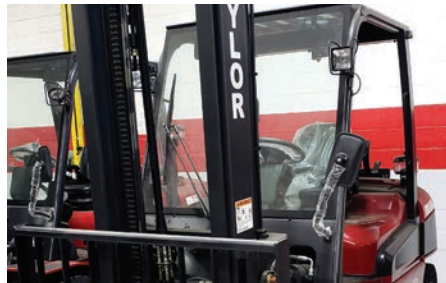
Multiple ISO hook-type carriages are available. Side shift and hydraulic fork position carriages help position forks without operator leaving the cabin.



There is a vast array of special attachments for your application. Our industry standard ISO carriages will accept any properly sized 3rd party attachment.



Working in containers introduces special height constraints. The available 87" reduced height overhead guard is purpose built for this low height application.



The partial cab option has front glass w/windshield wiper and solid roof w/sky-view window. It provides protection from the elements and retains ease of entry.



Full cabs with heat, defrost and optional A/C are available for max environmental comfort. Bi-fold doors lift off to provide open air cabin when needed.



HDI D34 Diesel Engine T4F: known for their rugged durability and long-lasting performance, making them an ideal choice for heavy-duty industrial applications.



Changing LPG tanks can be difficult for some operators. The optional swing-out, drop-down tank bracket allows operators to load a tank with ease.



Kubota WG3800 LPG
85.3hp & 208.3ft-lbs tq
CARB & EPA Certified

Environmentally Friendly
Vaporizer & Pressure
Regulator Combined



GT-135, GT-155, GT-165 & GT-180 HEAVY-DUTY FORKLIFTS

Available Models:
GT40-50, GT60-66, GTR80-90, GTR100-110-120, GT135-155-165, & GT180



GT-135

Rated Capacity: 13,500-lbs (6,123 kg)
Load Center: 24-in (610 mm)
Wheelbase: 88.6-in. (2,250 mm)



GT-155

Rated Capacity: 15,500-lbs (7,031 kg)
Load Center: 24-in (610 mm)
Wheelbase: 88.6-in. (2,250 mm)



GT-165

Rated Capacity: 16,500-lbs (7,484 kg)
Load Center: 24-in (610 mm)
Wheelbase: 88.6-in. (2,250 mm)



GT-180

Rated Capacity: 18,000-lbs (8,165 kg)
Load Center: 24-in (610 mm)
Wheelbase: 98.4-in. (2,499 mm)

DRIVE SYSTEM

- Deutz 3.6L 74hp tier-4 final diesel engine*
- PSI-4X 4.3L 110hp tier-4 final LPG engine (optional)*
- 3 speed powershift transmission with standard inching
- Powertrain protection system for engine and transmission
- 24-volt electrical system (12-volt with LPG)
- Planetary drive axle with wet disc brakes

CHASSIS

- All-welded steel frame with integral counterweight
- Heavy 3/8" thick fenders to limit debris damage
- Easy lift steel gull-wing hood is lockable
- Recessed tow pin integrated into counterweight
- Low height steps with non-skid surface

UPRIGHT & CARRIAGE

- Upright/mast is pin mounted to drive axle/chassis
- 2-stage & 3-stage uprights (lift heights up to 315")
- Nested i-beam uprights feature canted load rollers
- Silent staging upright cylinders prevent racking
- Pin-type carriage is standard (ISO hook type available)
- Side shift carriage and hydraulic fork positioners available

OPERATOR COMPARTMENT & ERGONOMICS

- Comfortable isolation mounted operator base
- Overhead guard standard (full cab and a/c available)
- Fully adjustable vinyl mechanical suspension seat
- LCD dash display with audible fuel & temp warnings
- Adjustable steering column pivots above the knee

*Attention: Taylor GT Models equipped with Tier-3 (Diesel) and Tier-0 (LPG) are available for sale outside of the highly regulated countries of North America, Europe, and Japan.

GT-135, GT-155, GT-165 & GT-180: SPECIAL FEATURES



Ergonomic hydraulic control levers minimize driver fatigue and feature proportional control for precise load placement. Fingertip controls are also available.



Comfortable full suspension seat adjust for operators up to 370-lbs. It features fore/aft/vertical travel, 20° pivoting backrest, OPS system, and orange seatbelt.



LCD display has integral engine protection system with alarm (monitors coolant temp, oil temp, and engine oil pressure). Speed control is also available.



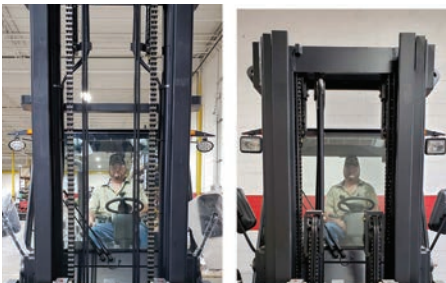
Dual drive tire planetary front axle features hydraulic actuated wet disc brakes. Available SOLID tires help prevent downtime due to flats.



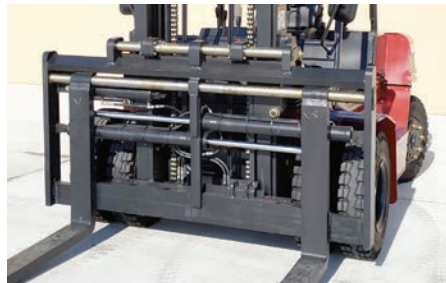
When working outside, it can be difficult to keep your product clean. The available fender extensions with mudflaps were designed to protect your investment.



Steer axles endure heavy stress. GT steer axles feature fully boxed single cylinder design, with tapered roller bearings, purpose built for harsh applications.



Nested I-beam mast rails provide the operator a wider view through the mast. Standard and multi-stage free-lift masts are available with lift heights up to 315-in.



Pin-type and optional hook-type carriages are available. Side shift & hydraulic fork positioning will position forks without operator leaving the cabin.



Multiple fork profiles are available. If something other than std. pallet forks is required, we can meet that need. (Special thin plywood/lumber forks shown).



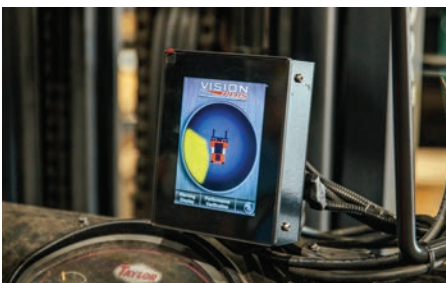
The partial cab option has front glass w/windshield wiper and solid roof w/sky-view window. It provides protection from the elements and retains ease of entry.



Full cabs with heat, defrost and optional A/C are available for max environmental comfort. AM/FM stereo radio with CD player with Bluetooth included.



While our enclosed cabs meet full B56.1 FOPS protection standards, some customer applications require our GT front/top glass and A/C guards.



Vision Plus™ provides the operator with real-time information concerning the location and tracking of pedestrians in the operating area of the vehicle.



The Deutz (74hp) high-torque diesel engine meets Tier-4 final emission standards without the need for DEF fluid (urea). Same protection systems apply as LPG.



The PSI LPG (110hp) engine features 236 ft.-lbs. of torque, engine shutdown protection system and a 2-stage air filtration system with safety element.



GTC-40, GTC-50, GTC-60 & GTC-65 CUSHION TIRE FORKLIFTS



DRIVE SYSTEM

- Ford 2.5l 70hp tier-4 final LPG engine
- Single speed transmission with standard inching
- Powertrain protection system for engine/transmission
- Single drive front axle with wet disc brakes
- 12-volt electrical system with heavy-duty battery
- Self Activated Parking Brake (SAPB)

CHASSIS

- All-welded steel frame with integral counterweight
- Heavy-duty, 3/8" thick fenders to limit debris damage
- Easy lift clamshell engine hood for maintenance access
- Recessed tow pin integrated into counterweight
- Low height steps with non-skid surface

UPRIGHT & CARRIAGE

- Upright/mast is trunnion mounted to drive axle
- 2-stage & 3-stage uprights (lift heights up to 312")
- Nested I-beam uprights feature canted load rollers
- Silent staging upright cylinders prevent racking
- ISO hook-type carriages allow great versatility
- Side shift carriage & hydraulic fork positioners available

OPERATOR COMPARTMENT & ERGONOMICS

- Comfortable isolation mounted operator base
- Overhead guard standard (full cab and a/c available)
- Fully adjustable vinyl mechanical suspension seat
- LCD dash display with audible fuel & temp warnings
- Adjustable steering column pivots above the knee

GTC-40, GTC-50, GTC-60 & GTC-65: SPECIAL FEATURES



Ergonomic hydraulic control levers minimize driver fatigue and feature proportional control for precise load placement. (fingertip controls available)



Comfortable full suspension seat adjust for operators up to 370-lbs. It features fore/aft/vertical travel, 20° pivoting backrest, OPS system, and orange seatbelt.



Dash display has integral engine protection system with alarm (monitors coolant temp, oil temp, and engine oil pressure). Speed control is also available.



Multiple front and rear-facing LED work lights configurations are available for all GT Series lift trucks to properly illuminate your specific applications.



Single drive planetary front axles feature hydraulically actuated wet disc brakes. Polyurethane & non-marking cushion tires are also available.



Steer axles endure heavy stress. GTR steer axles feature fully boxed single cylinder design, with tapered roller bearings, purpose built for harsh applications.



Nested I-beam mast rails provide the operator a wider view through the mast. Standard and multi-stage free-lift masts are available with lift heights up to 312-in.



Multiple ISO hook-type carriages are available. Sideshift and hydraulic fork position carriages help position forks without operator leaving the cabin.



There is a vast array of special attachments for your application. Our industry standard ISO carriages will accept any properly sized 3rd party attachment.



Open core copper radiator features corrugated fins with flat plate tubes. (4.6 fins per inch)



The GTC features a rear grab handle with a horn button to assist the operator in notifying anyone in the area of the machine's presence.



Underside protection items available: Drive Shaft Guard, Drive Axle Hub Seal, Belly Pan, & Steer Axle Debris Shield



The Ford 2.5L LPG (70hp) engine features long life timing chain, engine shutdown protection system and a 2-stage air filtration system with safety element.



Changing LPG tanks can be difficult for some operators. The optional swing-out, drop-down tank bracket allows operators to load a tank with ease.



The available Vertical Mast System will stop the mast at the vertical position from ground when the truck is not in motion.



GTE-50, GTE-60, GTE-70, GTE-80, GTE-90 & GTE-100 ELECTRIC FORKLIFTS



DRIVE SYSTEM

- 80V Lithium or 48V Lead Acid (GTE50-70)
- 80V Lithium or Lead Acid (GTE80-100)
- 19.7 kW AC Hydraulic Motor (GTE50-70)
- 26 kW AC Hydraulic Motor (GTE80-100)
- 3-phase AC transistorized drive and pump control
- Planetary Drive Axle with Wet Disc Brakes
- Powertrain protection system
- 12-volt electrical system with heavy-duty battery

CHASSIS

- All-welded steel frame with integral counterweight
- Heavy-duty, 3/8" thick fenders to limit debris damage
- Easy lift clamshell engine hood for maintenance access
- Recessed tow pin integrated into counterweight
- Low height steps with non-skid surface

UPRIGHT & CARRIAGE

- Upright/mast is trunnion mounted to drive axle
- 2-stage & 3-stage uprights (lift heights up to 288")
- Nested I-beam uprights feature canted load rollers
- Silent staging upright cylinders prevent racking
- ISO hook-type carriages allow great versatility
- Side shift carriage & hydraulic fork positioners available

OPERATOR COMPARTMENT & ERGONOMICS

- Comfortable isolation mounted operator base
- Overhead guard standard
- Fully adjustable vinyl mechanical suspension seat
- LCD dash display with three performance modes
- Adjustable steering column pivots above the knee

GTE-50, 60, 70, 80, 90 & GTE-100 SPECIAL FEATURES



Ergonomic hydraulic control levers minimize driver fatigue and feature proportional control for precise load placement.



Comfortable full suspension seat adjust for operators up to 370-lbs. It features fore/aft/vertical travel, 20° pivoting backrest, OPS system, and orange seatbelt.



Dash display has three performance modes, Economy, Standard, and Power. Speed control is also available.



Multiple front and rear-facing LED work light configurations are available for all GT Series lift trucks to properly illuminate your specific applications.



The GTE series can be configured with non-marking solid pneumatic tires.



Steer axles endure heavy stress. The GTE steer axles feature fully boxed single cylinder design, with tapered roller bearings, purpose built for harsh applications.



Nested I-beam mast rails provide the operator a wider view through the mast. Standard and multi-stage free-lift masts are available with lift heights up to 288-in.



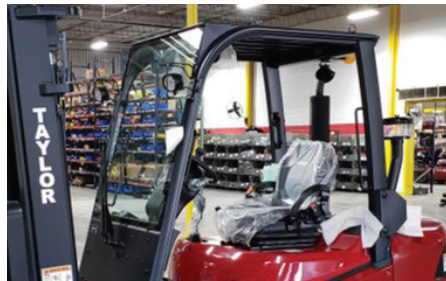
Multiple ISO hook-type carriages are available. Sideshift and hydraulic fork position carriages help position forks without operator leaving the cabin.



There is a vast array of special attachments for your application. Our industry standard ISO carriages will accept any properly sized 3rd party attachment.



The GTE series "Curve Cut Back" feature allows for speed control when navigating in turns.



The partial cab option has front glass with windshield wiper, solid roof and sky-view window. This provides protection from the elements and retains ease of entry.



Full cabs with heat, defrost and optional A/C are available for max environmental comfort. Bi-fold doors lift off to provide open air cabin when needed.



GTE-50, & 60S Battery Information:

- Min. Weight: 3,435 lbs (1558 kg)
- Type: A-14 SBE 160 Black

See specification sheet for compartment size



GTE-60, & 70 Battery Information:

- Min. Weight: 4,108 lbs (1863 kg)
- Type: A-14 SBE 160 Black

See specification sheet for compartment size



GTE-80, 90, & 100 Battery Information:

- Min. Weight: 4,562 lbs (2069 kg)
- Type: A-10 SBE 320 Black

See specification sheet for compartment size

GT Series: Focus On SAFETY



Overhead Guards

Overhead guards meet design/performance requirements and FOPS standards in ANSI B56.1 in effect at the time of manufacture.



Operator Presence System

The OPS seat switch will not allow the transmission or hydraulics to engage unless the operator is in the seat. The orange seat belt can be integrated into this system.



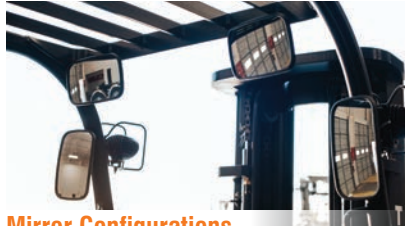
Ratchet Parking Brake

Ratchet style Parking Brake fully disengages transmission when set to prevent the operator from driving through and damaging the parking brake.



Grab Handles

There are multiple grab handles to assist entry and exit into the operator compartment. There is also a rear-mount reverse handle with integrated horn button.



Mirror Configurations

Multiple convex mirror configurations are utilized across the GT Series. These include interior and exterior mounting locations to assist the operator.



Pedestrian Detection

Optional Vision Plus™ provides the GT operator with real-time info concerning the location and tracking of pedestrians in the area around the equipped vehicle.



Backup Alarm

Audible back-up alarms are standard on all GT Series lift trucks. They are reverse activated and cannot be turned off by the operator.



Beacon & Blue Floor Spotlight

Many industrial operations require Blue (or other color) Spot Lights that project onto the floor. We offer "key-on" or "directionally activated" configurations. Amber safety beacon is standard.



Light Configurations

Headlights, rear turn signal, and safety flashers are standard. Additional light packages, including LED rear-facing and mast-mounted work lights, are available.



taylorsuddenservice.com

Taking Care of Our Customers is
PRIORITY ONE!

24/7

Parts, Service & Support



Scan The Code For
Factory Direct Store Locations:
or visit us on the web at www.taylorsuddenservice.com

